

 **BOEING**
COMPONENT
MAINTENANCE MANUAL

TO: ALL HOLDERS OF AFT ATTENDANTS PANEL ASSEMBLY COMPONENT MAINTENANCE
MANUAL 25-29-55

REVISION NO. 9 DATED JUL 01/04

HIGHLIGHTS

Pages which have been added or revised are outlined below together with the highlights of the revision. Remove and insert the affected pages as listed and enter Revision No. and date on the Record of Revision Sheet.

CHAPTER/SECTION

AND PAGE NO.

DESCRIPTION OF CHANGE

TITLE PAGE

Removed coverage for 417T6010-69.

1

101-102,104,107,

114-116,118-119

25-29-55

HIGHLIGHTS

01.1

Page 1

Jul 01/04

AFT ATTENDANTS PANEL ASSEMBLY

PART NUMBERS 417T6010-57 THRU -68,-70 THRU-73
285T0629-12,-14,-67,-69,-70,-74

COMPONENT MAINTENANCE MANUAL
WITH
ILLUSTRATED PARTS LIST

25-29-55

TITLE PAGE

Page 1

Jul 01/04

01.1

REVISION RECORD

- Retain this record in front of manual. On receipt of revision, insert revised pages in the manual, and enter revision number, date inserted and initial.

REVISION NUMBER	REVISION DATE	DATE FILED	BY	REVISION NUMBER	REVISION DATE	DATE FILED	BY

TEMPORARY REVISION AND SERVICE BULLETIN RECORD

BOEING SERVICE BULLETIN	BOEING TEMPORARY REVISION	OTHER DIRECTIVE	DATE OF INCORPORATION INTO MANUAL
417T6010-25-02 285T0629-25-01 285T0629-25-04		MC B1381-002 PRR B11396 MC 0132MP6010 PRR C12062-2 PRR C12066-2 PRR B12237-1R	JAN 10/86 JAN 10/86 JUL 10/86 JUL 01/88 JUL 01/88 OCT 01/91 OCT 01/91 OCT 01/91

25-29-55

TR & SB RECORD

01.1

Page 1

Oct 01/91

PAGE	DATE	CODE	PAGE	DATE	CODE
25-29-55			TESTING & TROUBLE SHOOTING CONT.		
TITLE PAGE			112	MAR 01/02	01.101
*1	JUL 01/04	01.1	113	MAR 01/02	01.101
2	BLANK		*114	JUL 01/04	01.1
REVISION RECORD			*115	JUL 01/04	01.1
1	JUL 01/88	01.1	*116	JUL 01/04	01.1
2	BLANK		117	MAR 01/02	01.101
TR & SB RECORD			*118	JUL 01/04	01.1
1	OCT 01/91	01.1	*119	JUL 01/04	01.1
2	BLANK		120	MAR 01/02	01.101
LIST OF EFFECTIVE PAGES			REPAIR-GENERAL		
*1	JUL 01/04	01	601	OCT 01/91	01.1
THRU LAST PAGE			602	OCT 01/91	01.1
CONTENTS			ILLUSTRATED PARTS LIST		
1	JUL 01/88	01.1	1001	JUL 01/88	01.1
2	BLANK		1002	NOV 01/01	01.1
INTRODUCTION			1003	NOV 01/01	01.101
1	OCT 01/91	01.1	1004	NOV 01/01	01.101
2	BLANK		1005	NOV 01/01	01.101
DESCRIPTION & OPERATION			1006	NOV 01/01	01.101
1	OCT 01/91	01.1	1007	NOV 01/01	01.101
2	BLANK		1008	NOV 01/01	01.101
TESTING & TROUBLE SHOOTING			1009	NOV 01/01	01.101
*101	JUL 01/04	01.1	1010	NOV 01/01	01.101
*102	JUL 01/04	01.1	1011	NOV 01/01	01.101
103	MAR 01/02	01.1	1012	NOV 01/01	01.101
*104	JUL 01/04	01.1	1013	MAR 01/99	01.1
105	MAR 01/02	01.101	1014	MAR 01/99	01.1
106	MAR 01/02	01.101	1015	MAR 01/99	01.1
*107	JUL 01/04	01.1	1016	NOV 01/01	01.1
108	MAR 01/02	01.101	1017	MAR 01/99	01.1
109	MAR 01/02	01.101	1018	MAR 01/99	01.1
110	MAR 01/02	01.101	1019	MAR 01/99	01.1
111	MAR 01/02	01.101	1020	MAR 01/99	01.1
			1021	MAR 01/99	01.1
			1022	MAR 01/99	01.1
			1023	MAR 01/99	01.1
			1024	MAR 01/99	01.1
			1025	MAR 01/99	01.1
			1026	MAR 01/99	01.1
			1027	MAR 01/99	01.1

* = REVISED, ADDED OR DELETED

25-29-55

EFFECTIVE PAGES
CONTINUED Page 1
01 Jul 01/04

PAGE	DATE	CODE	PAGE	DATE	CODE
ILLUSTRATED PARTS LIST		CONT.			
1028	MAR 01/99	01.1			

* = REVISED, ADDED OR DELETED

25-29-55

EFFECTIVE PAGES
LAST PAGE Page 2
01 Jul 01/04

TABLE OF CONTENTS

<u>Paragraph Title</u>	<u>Page</u>
Description and Operation	1
Testing and Trouble Shooting	101
Disassembly*[1]	
Cleaning*[1]	
Check*[1]	
Repair	601
Assembly*[1]	
Fits and Clearances (not applicable)	
Special Tools, Fixtures, and Equipment*[2]	
Illustrated Parts List	1001

|*[1] Use applicable procedures in 20-11-05 and standard industry practices.

*[2] Special instructions not required.

INTRODUCTION

The instructions in this manual supply the data necessary to do the maintenance functions together with the test, trouble shooting, and replacement of the defective components.

This manual is divided into different parts:

- | | |
|---|-----------------------------|
| 1. Title Page | 4. List of Effective Pages |
| 2. Record of Revisions | 5. Table of Contents |
| 3. Temporary Revisions &
Service Bulletin Record | 6. Introduction |
| | 7. Procedures and IPL Parts |

Refer to the Table of Contents for the page location of the applicable parts.

All dimensions, measures, quantities and weights used in the manual are in English units. When metric equivalents are given they will be in the parentheses that follow the English units.

The Illustrated Parts List (IPL) is used as shown in the introduction of that part.

Design changes, optional parts, configuration differences and Service Bulletin modifications cause different part numbers. These part numbers are identified in the IPL with an alphabetical character to the end of the basic item number. The new item number is referred to as an alpha-variant. Throughout the manual, IPL basic item numbers also apply to alpha-variants unless shown differently.

Verification:

Testing/TS Aug 6/1985

25-29-55

INTRODUCTION

01.1

Page 1

Oct 01/91

AFT ATTENDANTS PANEL ASSEMBLY

DESCRIPTION AND OPERATION

CAUTION: OBEY THE PROCEDURES IN 20-12-02, HANDLING OF ELECTROSTATIC SENSITIVE DEVICES WHEN HANDLING COMPONENT P/N 415T6010-58. ELECTROSTATIC DISCHARGE CAN CAUSE DAMAGE TO THIS COMPONENT.

1. The aft attendants panel assembly has switches and indicator(s) installed on a plastic shell. A wire bundle connects the different components and supplies two connectors as the interface with airplane wiring.
2. The water signal unit installed in 417T6010-58 is covered in 38-14-51.

25-29-55

DESCRIPTION & OPERATION

01.1

Page 1

Oct 01/91

TESTING AND TROUBLE SHOOTING

CAUTION: OBEY THE PROCEDURES IN 20-12-02, HANDLING OF ELECTROSTATIC SENSITIVE DEVICES WHEN HANDLING COMPONENT P/N 415T6010-58. ELECTROSTATIC DISCHARGE CAN CAUSE DAMAGE TO THIS COMPONENT.

1. Test Equipment

A. Power Supply: 28v dc, 2 ampere
10v dc
Variable, 0 to -15v dc

B. Multimeter: Any Simpson 260 Series, or equivalent
Fluke 8050A, or equivalent

C. Test Connectors:

BACC45FN24-61S (connects with P1)
BACC45FN16-24S (connects with P2)

Boeing Breakout Box A33003-2 with cables A33003-65 and A33003-30 may be used.

2. Functional Test

A. Identify the part under test. Refer to chart below for part dash number applicability. This will give the figure and sheets to use for the functional test. Figures 102 and 103 are for the functional test, Fig. 104 is the schematics.

B. For component identification and location, refer to Fig. 101.

C. Do the functional test as specified in Fig. 102 and 103. Apply voltage as necessary for the step, do the step and remove voltage. Refer to Component Tested column for suspect component(s) should there be a failure.

25-29-55

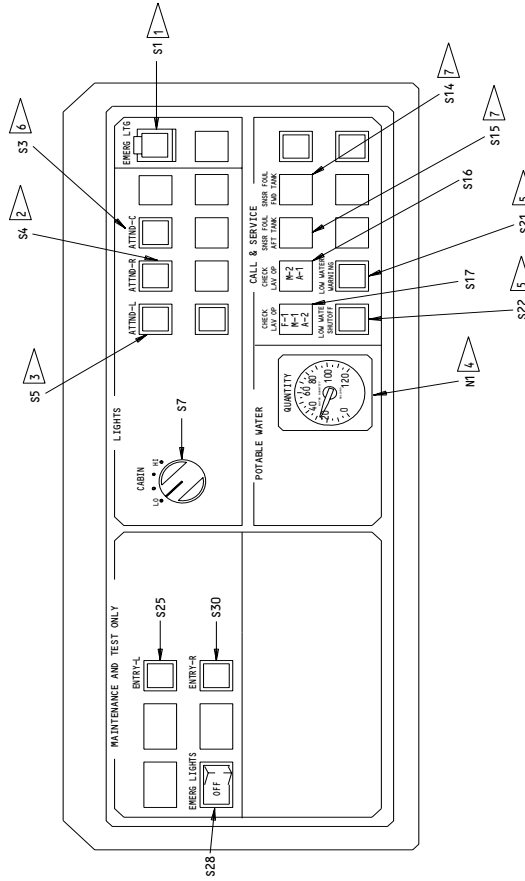
3. Test Figure Applicability Chart

FIG.	SH	PANEL ASSEMBLY 417T6010																					
		ALL	-57	-58	-59	-60	-61	-62	-63	-64	-65	-66	-67	-68	-70	-71	-72	-73					
101	--	X																					
102	1		X	X	X		X	X	X	X	X	X	X	X	X	X	X	X					
102	2					X																	
103	1	X																					
103	2	X																					
103	3			X																			
104	1	X																					
104	2		X								X						X						
104	3			X																			
104	4			X																			
104	5				X																		
104	6					X																	
104	7						X	X	X							X							
104	8										X		X										
104	9											X			X								
104	10																		X				
104	11																			X		X	
104	12																						

FIG.	SH	PANEL ASSEMBLY 285T0629																						
		ALL	-12	-14	-67	-69	-70	-74																
101	--	X																						
102	1		X	X		X	X	X																
102	2				X	X	X	X																
103	1	X																						
103	2	X																						
103	3																							
104	1	X																						
104	2																							
104	3																							
104	4																							
104	5																							
104	6				X																			
104	7		X	X							X													
104	8					X																		
104	9																							
104	10																							
104	11							X																
104	12																							

Test Figure Applicability Chart
Figure 100

25-29-55



- 1 INSTALLED ON 41776010-57,-59,-64,-70
- 2 INSTALLED ON ALL EXCEPT 41776010-60,-65; 285T0629-67,-69
- 3 INSTALLED ON ALL EXCEPT 41776010-60,-65,-69; 285T0629-67,-69
- 4 QUANTITY SHOWN IN LITRES ON 41776010-58,-63,-66,-67,-68,-73; 285T0629-74
- 5 INSTALLED ON 41776010-58
- 6 INSTALLED ON 41776010-67,-71; 285T0629-12,-14,-70 ONLY
- 7 INSTALLED ON 285T0629-67,-69,-70,-74

NOTE: SWITCH NOMENCLATURE NOT SHOWN FOR EACH CONFIGURATION.

Component Identification
 Figure 101

APPLY 28V DC + -	SWITCH OPERATION	CONTI- NUITY BETWEEN	OPEN BETWEEN	INDICATOR(S) ON	COMPONENT TESTED
<u>P1 PINS</u>	PUSH THE SWITCHES SEVERAL TIMES AND THEN LEAVE ON <u>417T6010-67,-71;</u> <u>285T0629-12,-14,-70</u>		<u>P1 PINS</u>	THE LIGHT SWITCHES COME ON AND GO OFF AND THEN STAY ON	
13 11	S3 <u>ALL EXCEPT 417T6010-65;</u> <u>285T0629-69</u>			S3	S3
13 11	S4 <u>ALL EXCEPT 417T6010-59</u>			S4	S4
13 11	S5 <u>ALL</u>			S5	S5
13 11	S25			S25	S25
13 11	S30			S30	S30
13 11	PUSH S28			S28 ON	S28
13 11	RELEASE S28			S28 OFF	
			37 & 38		
	PUSH AND HOLD S28 RELEASE S28 <u>ALL EXCEPT 417T6010-65;</u> <u>285T0629-69</u> <u>ALL EXCEPT 417T6010-59</u>	37 & 38			
	<u>417T6010-67,-71;</u> <u>285T0629-12,-14,-70</u>	13 & 16			S4
	<u>ALL</u>	13 & 15			S5
		13 & 17			S3
			13 & 14		K1
34 36		13 & 14			
			13 & 12		K2
34 35	PUSH S4,S5,S25,S30 (TO OFF)	13 & 12			
<u>P2 PINS</u>			<u>P2 PINS</u>		
9 8				S17 ON	S17
9 13				S17 OFF	
9 13	PUSH S17 MOMENTARILY			S17 ON	
11 10				S16 ON	S16
11 12				S16 OFF	
11 12	PUSH S16 MOMENTARILY			S16 ON	

417T6010-57,-58,-59,-61 THRU -68,-70 THRU -73
 285T0629-12,-14,-69,-70,-74

Functional Test
 Figure 102 (Sheet 1)

25-29-55

TESTING & TROUBLE SHOOTING
 01.1 Page 104
 Jul 01/04

APPLY 28V DC + -	SWITCH OPERATION	CONTI- NUITY BETWEEN	OPEN BETWEEN	INDICATOR(S) ON	COMPONENT TESTED
	<u>417T6010-60; 285T0629-67</u> PUSH THE SWITCHES SEVERAL TIMES AND THEN LEAVE ON		<u>P1 PINS</u>	THE LIGHT SWITCHES COME ON AND GO OFF AND THEN STAY ON	
<u>P1 PINS</u>					
13 11	S25			S25	S25
13 11	S30			S30	S30
13 11	PUSH S28			S28 ON	S28
13 11	RELEASE S28		37 & 38	S28 OFF	
	PUSH AND HOLD S28	37 & 38	13 & 12 13 & 14		
34 36		13 & 14	13 & 12		K1
34 35		13 & 12	13 & 14		K2
	PUSH S25,S30 (TO OFF) AND RELEASE S28				
			<u>P2 PINS</u>		
<u>P2 PINS</u>					
9 8				S17 ON	S17
9 13				S17 OFF	
9 13	PUSH S17 MOMENTARILY			S17 ON	
11 10				S16 ON	S16
11 12				S16 OFF	
11 12	PUSH S16 MOMENTARILY			S16 ON	
	<u>285T0629-67,-69,-70,-74</u>				
<u>P2 PINS</u>					
20 21				S14 ON	S14
20 10				S14 OFF	
20 10	PUSH S14 MOMENTARILY			S14 ON	
17 18				S15 ON	S15
17 8				S15 OFF	
17 8	PUSH S15 MOMENTARILY			S15 ON	

417T6010-60; 285T0629-67,-69,-70,-74

Functional Test
Figure 102 (Sheet 2)

25-29-55

COMPONENT TESTED	PROCEDURE	REQUIRED RESULTS			
S7	<u>ALL</u> Measure between P1 pins:	POS. 1 (full CCW)	POS. 2	POS. 3	POS. 4 (full CW)
	1 and 3	OPEN	OPEN	CON	CON
	4 and 6	OPEN	OPEN	OPEN	CON
	5 and 6	CON	OPEN	OPEN	OPEN
	7 and 10	OPEN	OPEN	OPEN	CON
	8 and 10	OPEN	CON	OPEN	OPEN
	31 and 32	CON	OPEN	OPEN	OPEN
	<u>ALL EXCEPT 417T6010-60; 285T0629-67</u>				
	2 and 3	OPEN	CON	CON	CON
	9 and 10	OPEN	OPEN	CON	CON
	<u>417T6010-60; 285T0629-67 ONLY</u>				
	2 and 3	OPEN	OPEN	CON	CON
	9 and 10	OPEN	CON	CON	CON
S1	<u>417T6010-57, -59, -64, -70 ONLY</u>				
	Apply 28V DC between P1 pins: 21(+) and 25(-)				
	Push S1 several times then Leave ON	S1 alternately ON/OFF then ON			
	Remove power				
	Measure between P1 pins:				
	25 and 24	CON			
	25 and 33	OPEN			
	Push S1 (to OFF)				
	Measure between P1 pins:				
	25 and 24	OPEN			
	25 and 33	CON			

 Functional Test
 Figure 103 (Sheet 1)

25-29-55

COMPONENT TESTED	PROCEDURE	REQUIRED RESULTS
N1	<p><u>417T6010-58 thru -65,-68,-71;</u> <u>285T0629-12,-67,-69,-70</u> Apply 0V DC between P2 pins 6(-) and 7(+)</p> <p>Adjust voltage to have gage measure exactly 0 GAL (0 L) (SOME GAGES MARKED IN LITRES, SOME IN GALLONS)</p> <p>Adjust voltage to have gage measure exactly:</p> <p style="padding-left: 40px;">40 GAL (151 L) 80 GAL (300 L) 120 GAL (455 L)</p>	<p>Voltage measures -0.20 to 0.0V DC</p> <p>-3.53 to -3.13V DC -6.87 to -6.67V DC -10.20 to -9.80V DC</p>
N1	<p><u>417T6010-57,-66,-67,-70,-72,-73;</u> <u>285T0629-14,-74</u> Apply 0V DC between P2 pins 6(-) and 7(+)</p> <p>Adjust voltage to have gage measure exactly 0 GAL (0 L) (SOME GAGES MARKED IN LITRES, SOME IN GALLONS)</p> <p>Adjust voltage to have gage measure exactly:</p> <p style="padding-left: 40px;">20 GAL (75 L) 40 GAL (150 L) 60 GAL (230 L) 80 GAL (300 L) 100 GAL (380 L) 120 GAL (455 L) 140 GAL (530 L) 160 GAL (605 L)</p>	<p>Voltage measures -0.20 to 0.0V DC</p> <p>-1.87 to -1.47V DC -3.26 to -2.86V DC -4.43 to -4.03V DC -5.48 to -5.08V DC -6.53 to -6.13V DC -7.53 to -7.13V DC -8.58 to -8.18V DC -10.20 to -9.80V DC</p>

Functional Test
Figure 103 (Sheet 2)

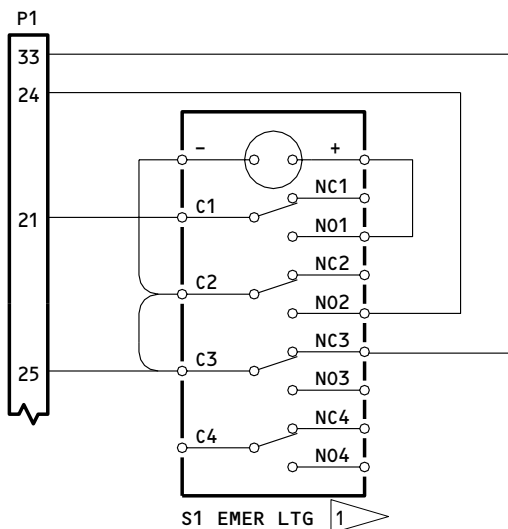
25-29-55

COMPONENTS TESTED	PROCEDURE	REQUIRED RESULTS
K3,M1,S21,S22	<p>Push S21 and S22 to off (if necessary).</p> <p>Connect P2-1 and P2-7 to P2-14 (ground).</p> <p>Apply +28V DC between P2-3(+) and ground (-).</p> <p>Apply -5V DC between P2-6(-) and ground (+).</p> <p>Slowly decrease -5V DC until S21 starts to flash.</p> <p>Push S21 (to on).</p> <p>Push low water shutoff switch-indicator (S22)(to on).</p> <p>Remove -5 and +28V DC power.</p> <p>Disconnect P2-1,P2-7, and P2-14.</p>	<p>Caps out (up).</p> <p>+28V DC between P2-16 and ground.</p> <p>0V DC between P2-15 and ground.</p> <p>Low water warning switch-indicator (S21) does not flash.</p> <p>-1.77 to -1.57V DC (measured) between P2-6 and ground.</p> <p>Indicator stops flashing and stays on.</p> <p>Indicator comes on and stays on.</p> <p>0V DC between P2-16 and ground.</p> <p>+28V DC between P2-15 and ground.</p>

417T6010-58
 Functional Test
 Figure 103 (Sheet 3)

25-29-55

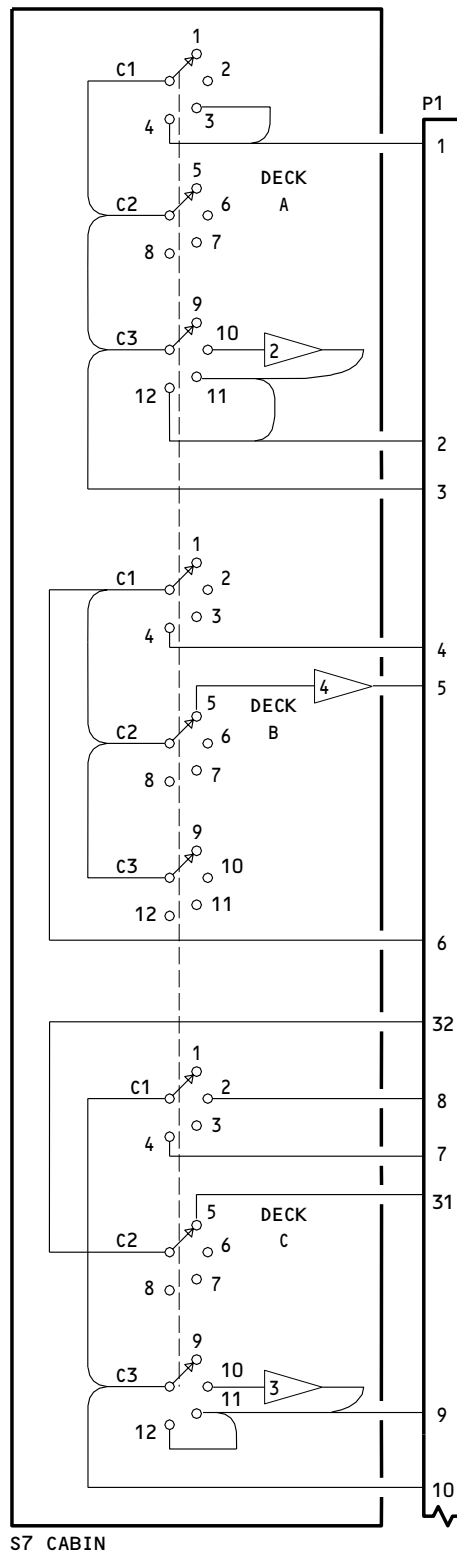
TESTING & TROUBLE SHOOTING
 01.101 Page 108
 Mar 01/02



S1 EMER LTG 1

NOTE: FOR 417T6010-57,-60,-64,-67,-70, 285T0629-67
 ALL WIRES ARE BMS 13-48, TYPE I, CLASS 1, SIZE AWG 22.
 FOR ALL OTHERS,
 ALL WIRES ARE BMS 13-48, TYPE I, CLASS 1, SIZE AWG 20.

- 1 INSTALLED ON 417T6010-57,-59,-64,-70
- 2 ALL EXCEPT 417T6010-60, 285T0629-67
- 3 417T6010-60, 285T0629-67
- 4 ALL EXCEPT 417T6010-71, 285T0629-70

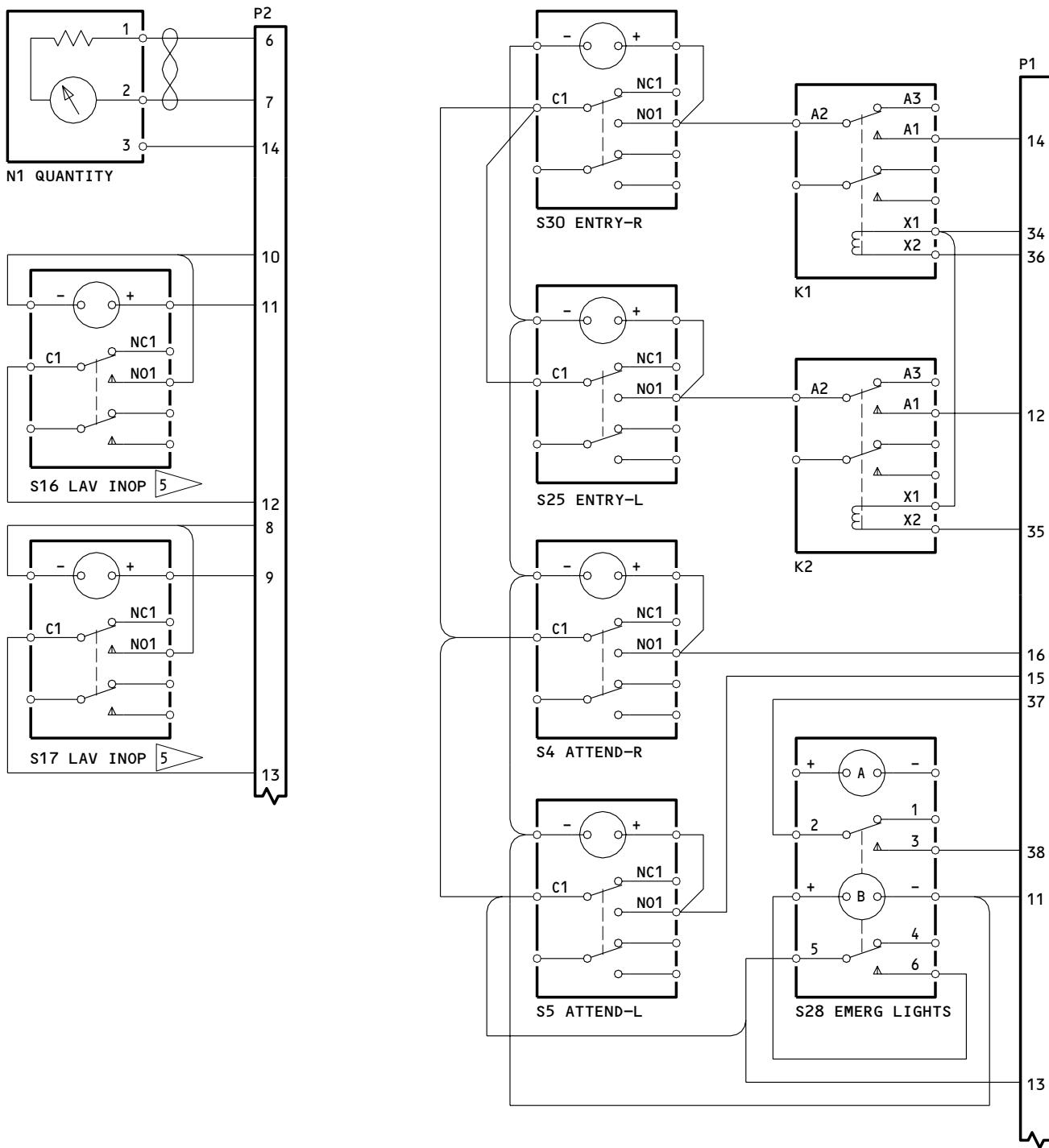


S7 CABIN

Schematic Diagram
 Figure 104 (Sheet 1)

25-29-55

TESTING & TROUBLE SHOOTING
 01.101 Page 109
 Mar 01/02



NOTE: ALL WIRES ARE BMS 13-48, TYPE I, CLASS 1, SIZE AWG 22.

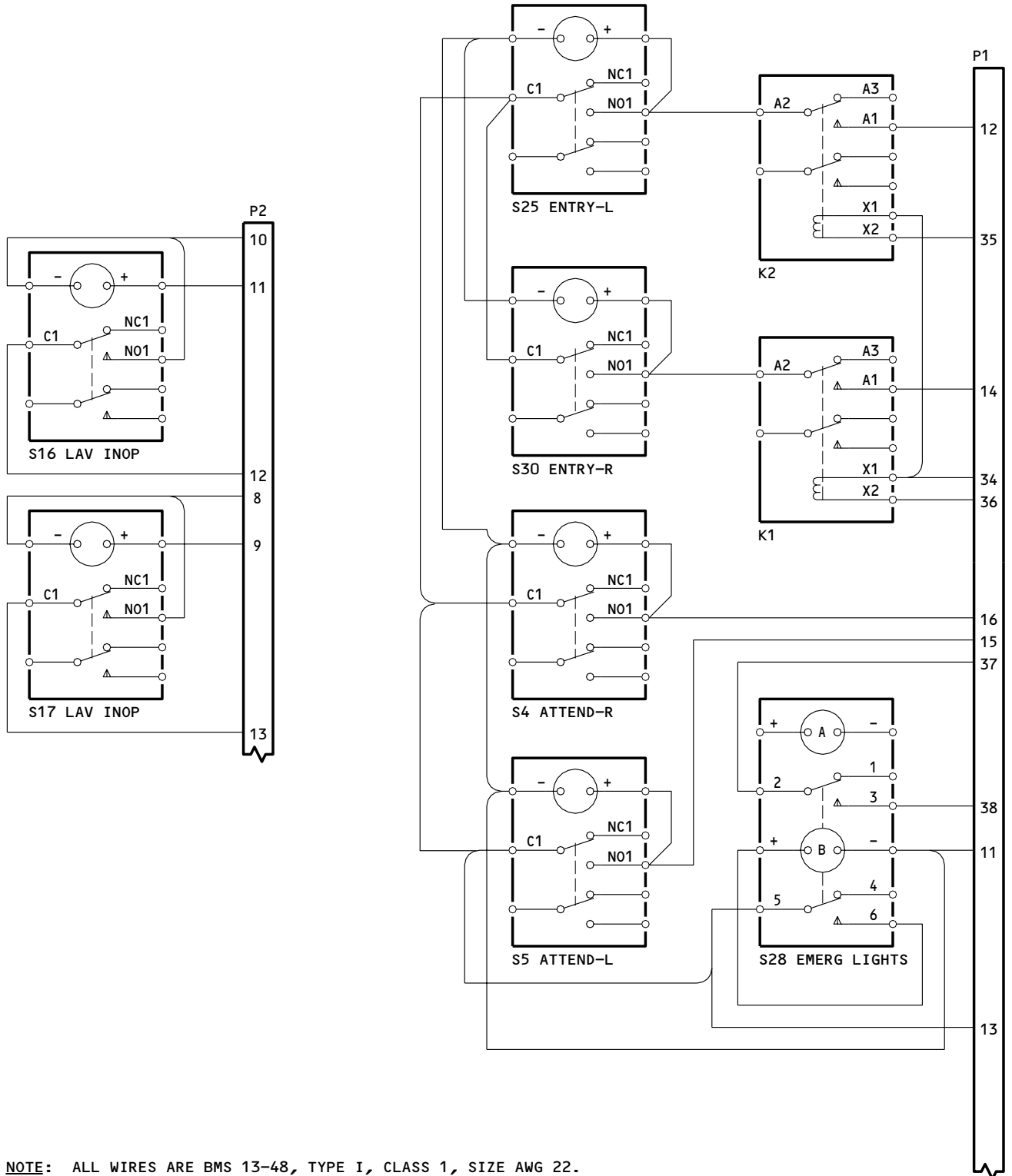
5 CHECK LAV ON SOME PANELS

417T6010-57,-64,-70

Schematic Diagram
 Figure 104 (Sheet 2)

25-29-55

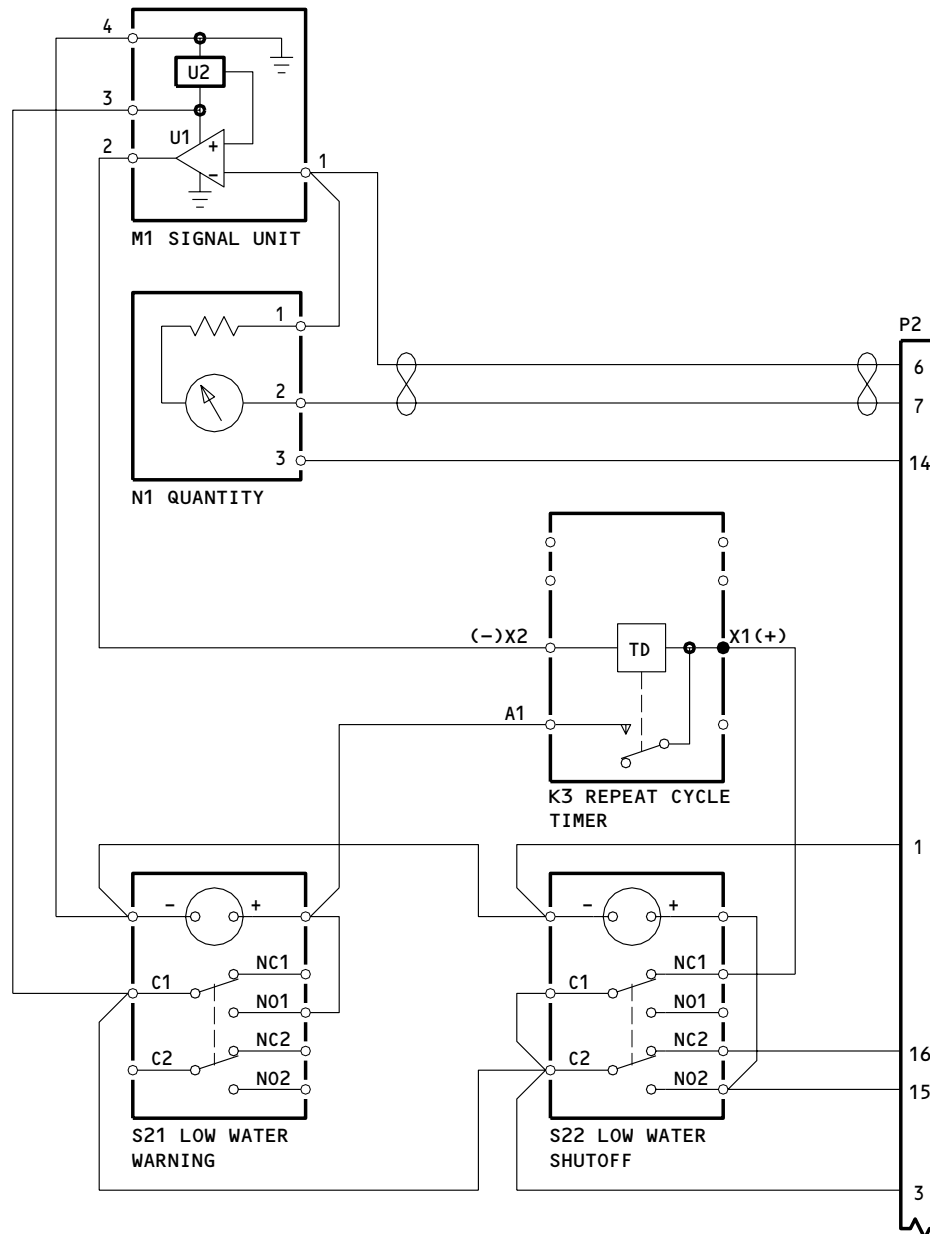
TESTING & TROUBLE SHOOTING
 01.101 Page 110
 Mar 01/02



NOTE: ALL WIRES ARE BMS 13-48, TYPE I, CLASS 1, SIZE AWG 22.

417T6010-58
 Schematic Diagram
 Figure 104 (Sheet 3)

25-29-55

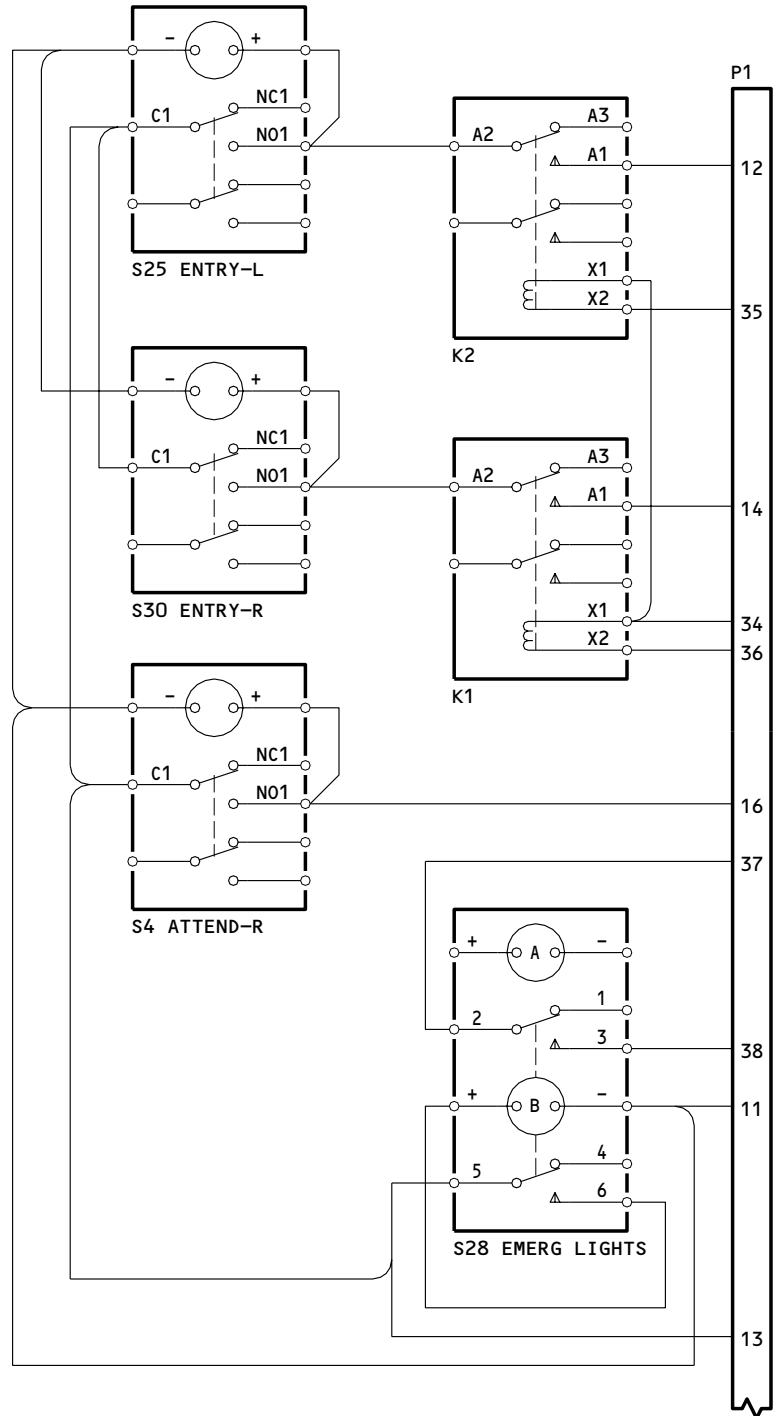
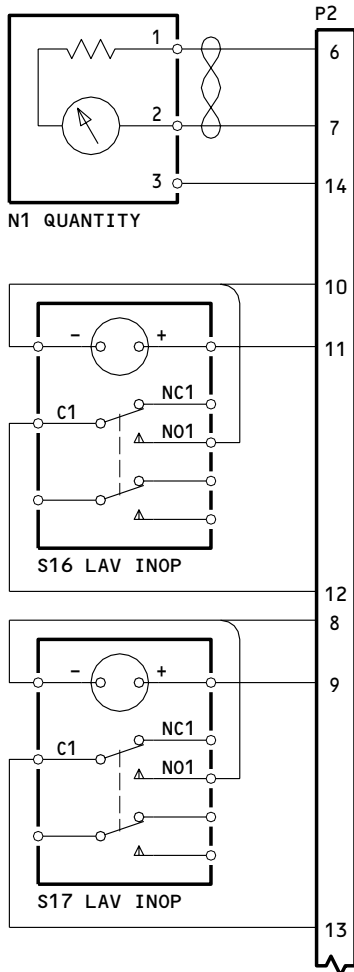


NOTE: ALL WIRES ARE BMS 13-48, TYPE I, CLASS 1, SIZE AWG 22.

417T6010-58

Schematic Diagram
 Figure 104 (Sheet 4)

25-29-55

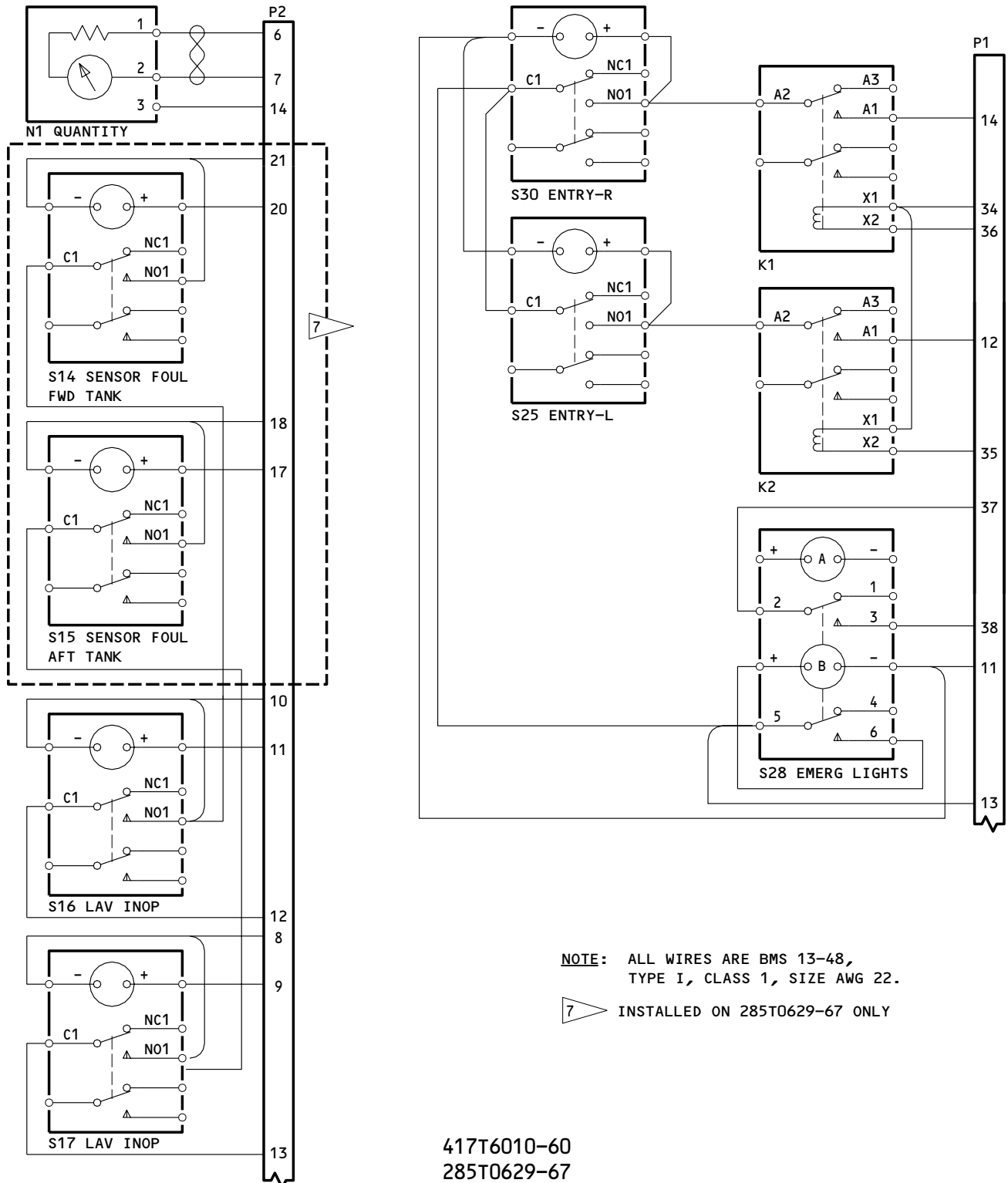


NOTE: ALL WIRES ARE BMS 13-48, TYPE I, CLASS 1, SIZE AWG 22.

417T6010-59

Schematic Diagram
 Figure 104 (Sheet 5)

25-29-55



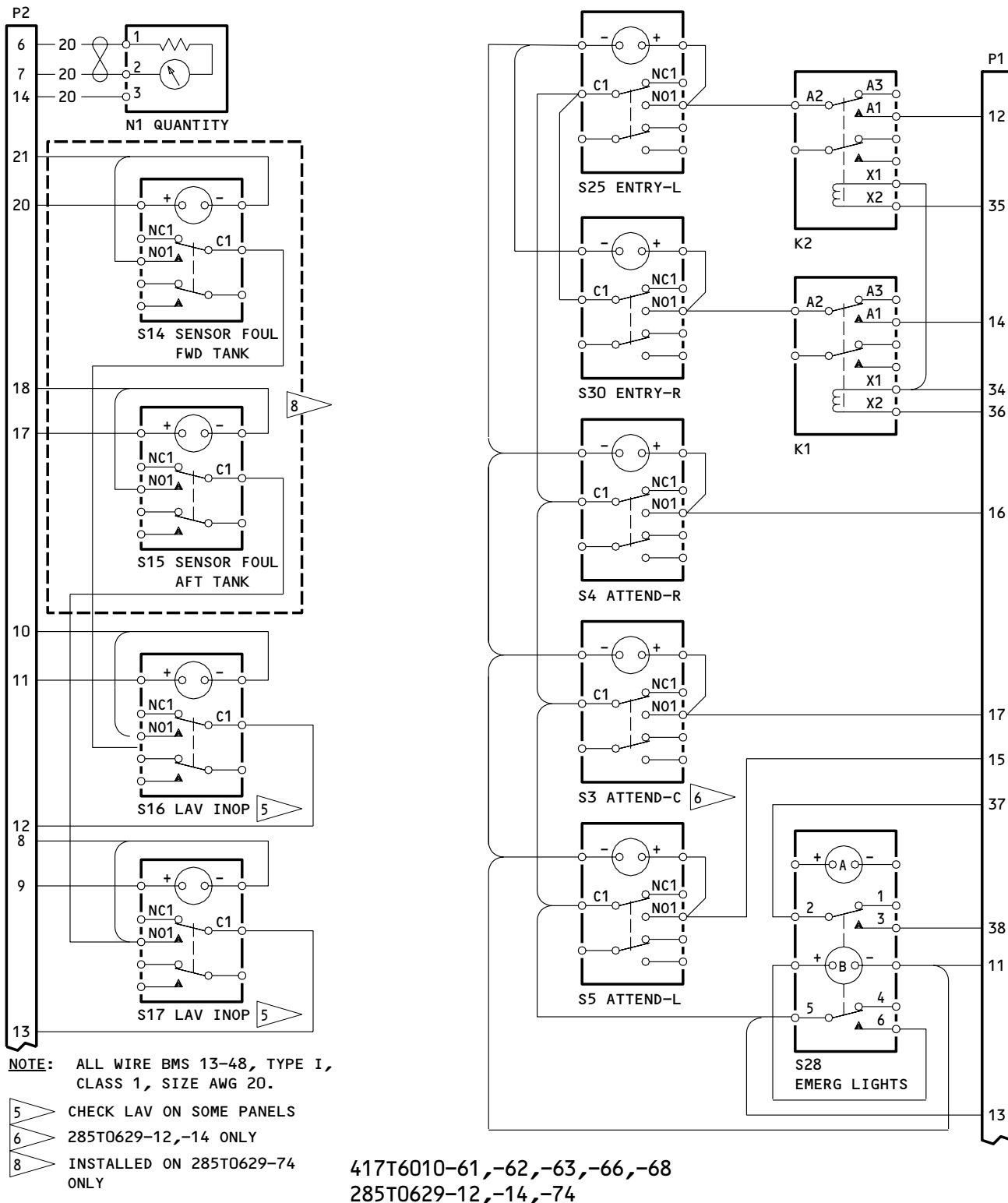
NOTE: ALL WIRES ARE BMS 13-48,
 TYPE I, CLASS 1, SIZE AWG 22.

7 INSTALLED ON 285T0629-67 ONLY

417T6010-60
 285T0629-67

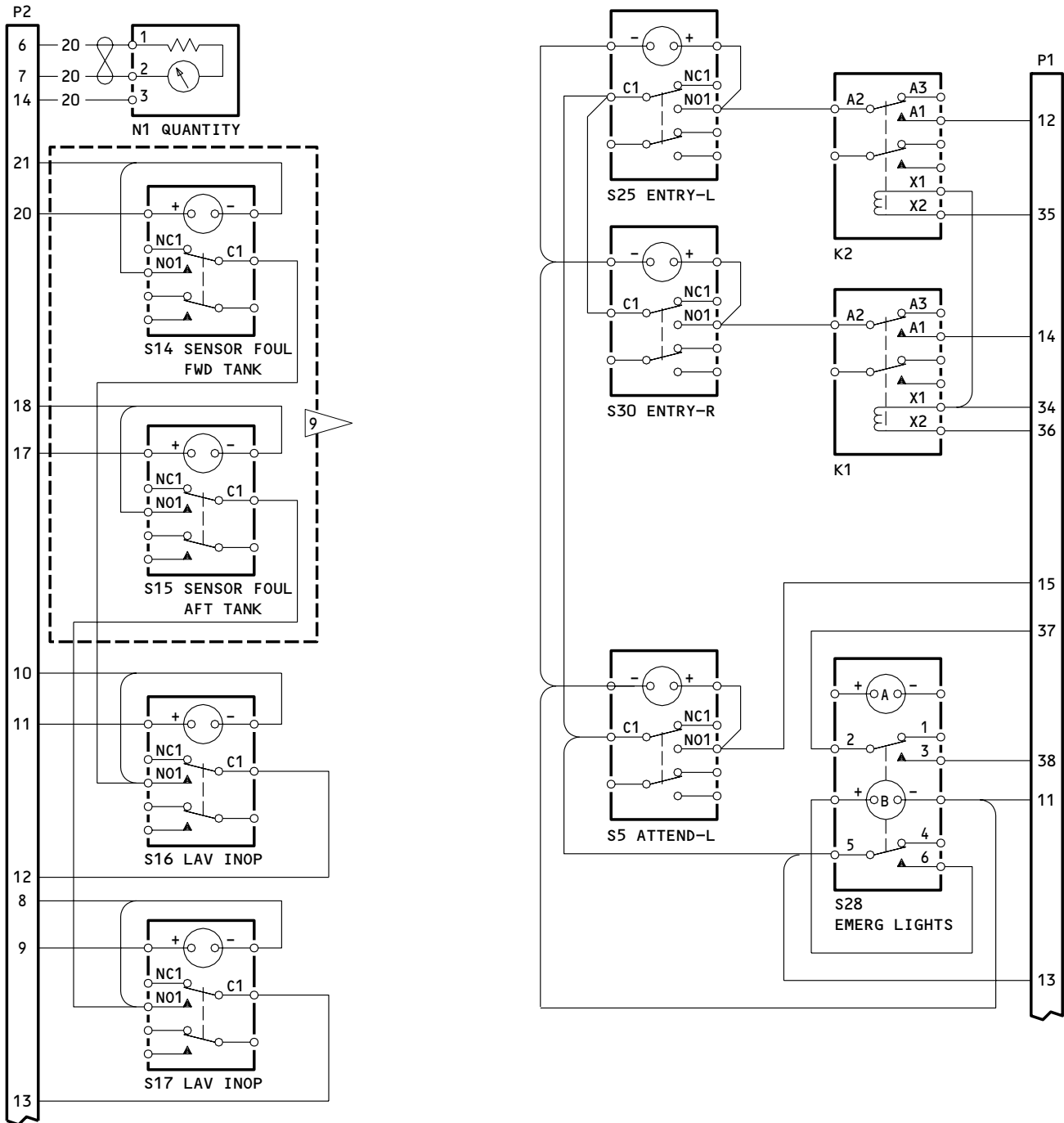
Schematic Diagram
 Figure 104 (Sheet 6)

25-29-55



Schematic Diagram
 Figure 104 (Sheet 7)

25-29-55



NOTE: ALL WIRE BMS 13-48, TYPE I, CLASS 1, SIZE AWG 20.

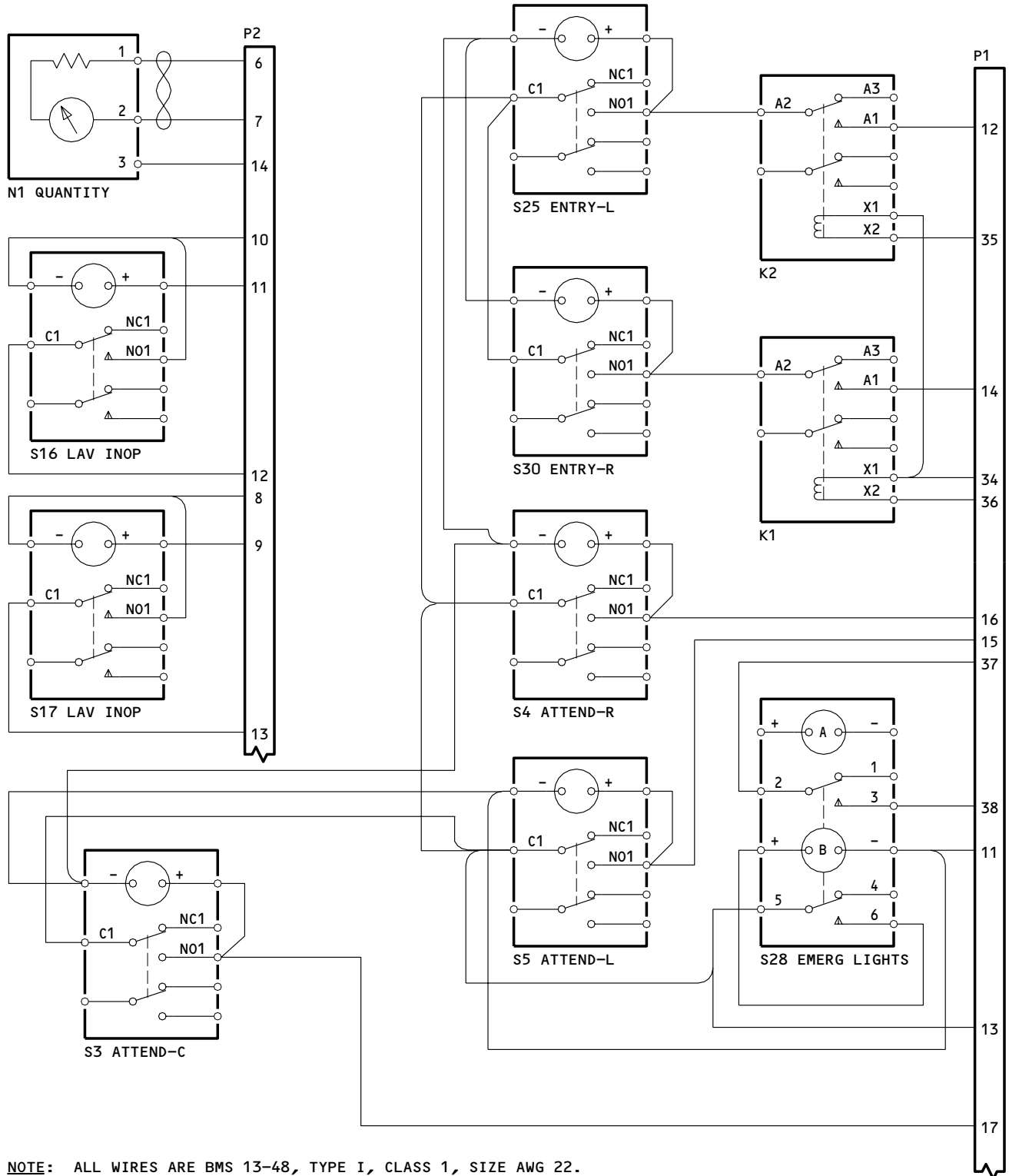
9 INSTALLED ON 285T0629-69 ONLY

417T6010-65
 285T0629-69

Schematic Diagram
 Figure 104 (Sheet 8)

25-29-55

TESTING & TROUBLE SHOOTING
 01.1 Page 116
 Jul 01/04



417T6010-67
 Schematic Diagram
 Figure 104 (Sheet 9)

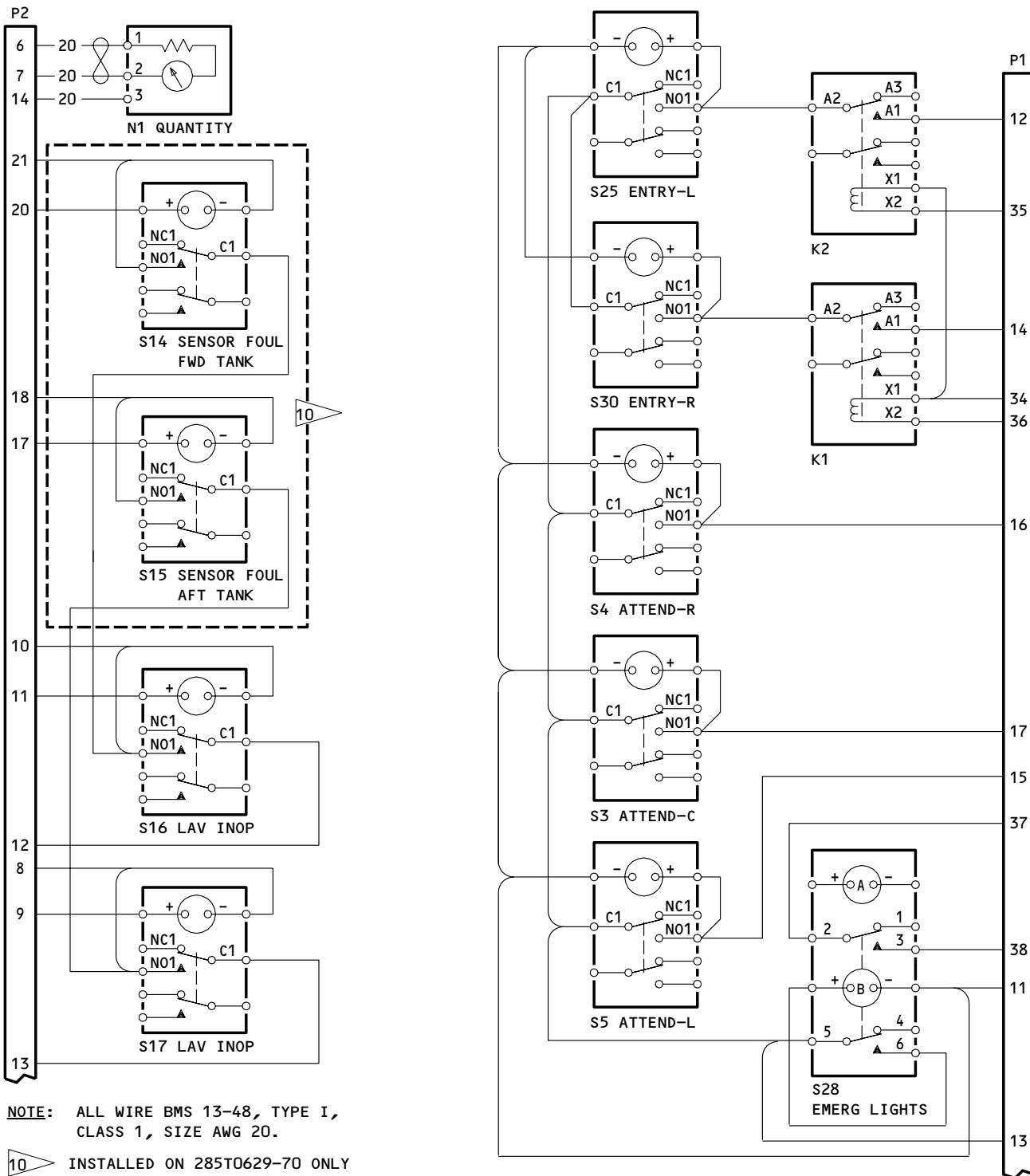
25-29-55

SHEET 10 HAS BEEN DELETED

Schematic Diagram
Figure 104 (Sheet 10)

25-29-55

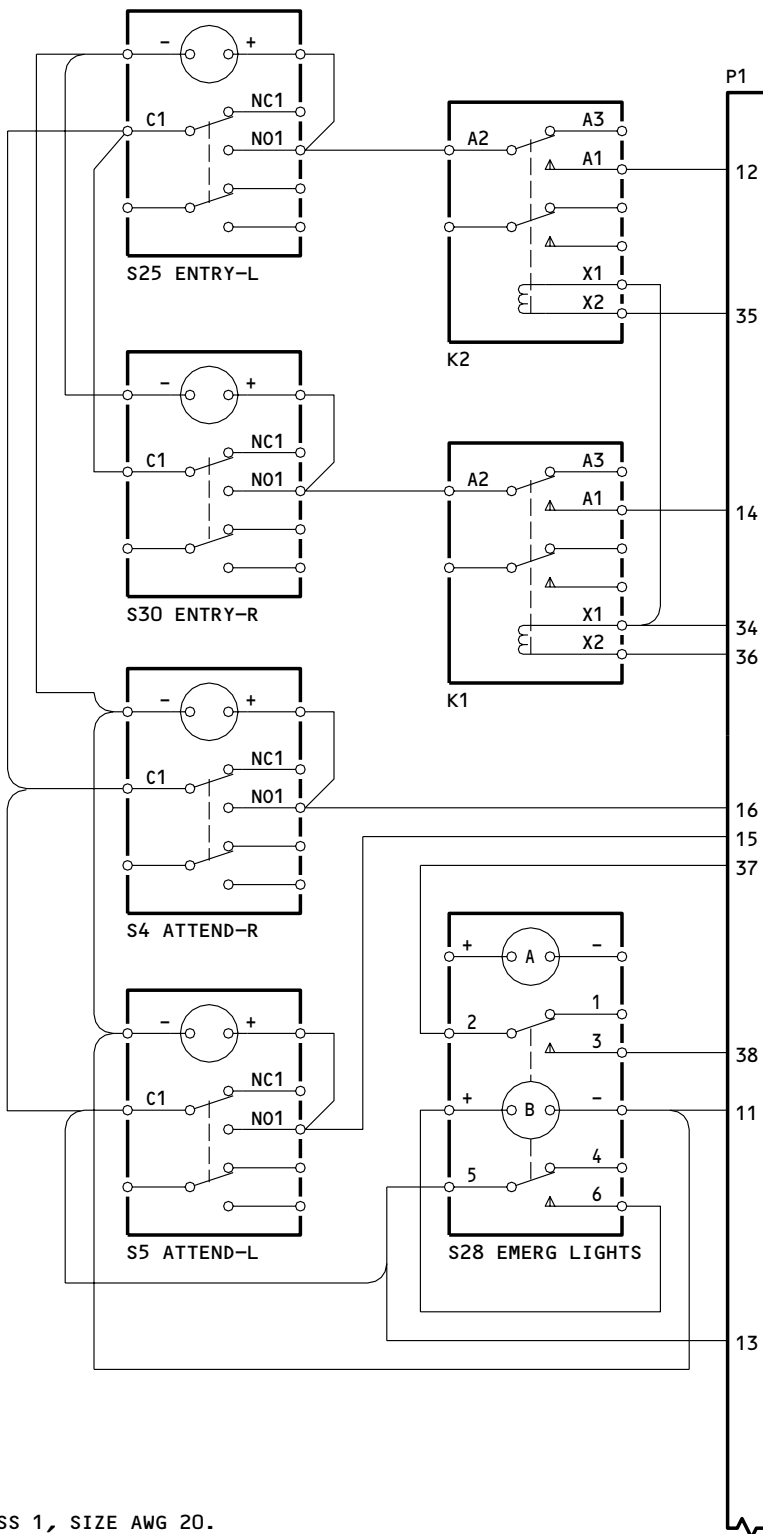
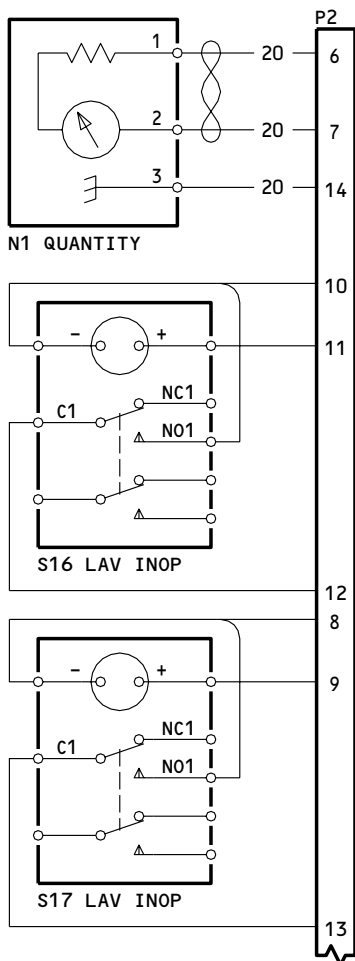
TESTING & TROUBLE SHOOTING
01.1 Page 118
Jul 01/04



417T6010-71
 285T0629-70

Schematic Diagram
 Figure 104 (Sheet 11)

25-29-55



NOTE: ALL WIRES ARE BMS 13-48, TYPE I, CLASS 1, SIZE AWG 20.

417T6010-72,-73
 Schematic Diagram
 Figure 104 (Sheet 12)

25-29-55

REPAIR

CAUTION: OBEY THE PROCEDURES IN 20-12-02, HANDLING OF ELECTROSTATIC SENSITIVE DEVICES WHEN HANDLING COMPONENT P/N 415T6010-58. ELECTROSTATIC DISCHARGE CAN CAUSE DAMAGE TO THIS COMPONENT.

1. Materials

- A. Glyptol No. 1201 (General Electric Co., Insulating Materials Product Section, 1 Campbell Road, Schenectady, New York 12036)
- B. Xylene (also known as xylol)
- C. Solvent: Aliphatic naphtha, denatured alcohol, or isopropyl alcohol
- D. Adhesive: Scotch-Grip Insulation Adhesive 37 (3M Company, 3M Center, St. Paul, Minnesota 55101)
- E. Aluminum oxide paper, 180 grit or finer
- F. Lint free wipers

2. For the repairs, use applicable procedures in 20-11-04 and standard industry practices except as follows:

- A. Bond track (IPL Fig. 1-295) and relay brackets (IPL Fig. 1-300) to rear of faceplate assembly with type 82 adhesive per 20-50-12.
- B. Replace the wires with BMS 13-48, type 1, class 1, AWG 20 except as follows:
 - (1) Wires that are between terminals of the same switch are QQ-W-343, type S tinned bus wire with insulating sleeving per MIL-I-22129 or BMS 13-48, type 1, class 1.
- C. To install the rotary switch S7, apply Glyptol No. 1201 to the threaded areas. Refer to the manufacturer's instructions.

NOTE: It can be difficult to remove switches which were installed with Glyptol No. 1201. Glyptol No. 1201 becomes soft by daubing coated threads with a swab that has xylene on it.

- D. To replace the switch S28, bond the raised bezel (IPL Fig. 1-80) to the front of the new switch as follows:
 - (1) Clean the faying surface on front of the switch and on the bezel as follows:
 - (a) Wipe with solvent.

25-29-55

REPAIR-GENERAL

01.1

Page 601

Oct 01/91

- (b) Remove the gloss with an aluminum oxide paper.
- (c) Wipe with a clean wiper.
- (d) Again, wipe with a solvent.
- (e) Let the solvent evaporate.

CAUTION: MAKE SURE THE ADHESIVE DOES NOT ENTER THE SWITCH MECHANISM.
THIS PREVENTS SWITCH MALFUNCTION OR FAILURE.

- (2) Apply adhesive to each faying surface (refer to the manufacturer's instructions) and let it dry (not longer than 1 hour). Put together the faying surfaces and keep the contact pressure for at least 1 hour. Prevent side and/or tension forces for 24 hours.

E. Replace the raised bezel on switch S28 as follows:

- (1) Push the switch out 0.20 inch maximum.
- (2) Remove the old bezel and adhesive.
- (3) Repeat D.(1) and D.(2).
- (4) Push the switch back in.

25-29-55

REPAIR-GENERAL

01.1

Page 602

Oct 01/91

ILLUSTRATED PARTS LIST

1. This section lists and illustrates replaceable or repairable component parts. The Illustrated Parts Catalog contains a complete explanation of the Boeing part numbering system.

2. Indentures show parts relationships as follows:

Assembly

Detail Parts for Assembly

Subassembly

Attaching Parts for Subassembly

Detail Parts for Subassembly

Detail Installation Parts (Included only if installation parts may be returned to shop as part of assembly)

3. One use code letter (A, B, C, etc.) is assigned in the EFF CODE column for each variation of top assembly. All listed parts are used on all top assemblies except when limitations are shown by use code letter opposite individual part entries.

4. Letter suffixes (alpha-variants) are added to item numbers for optional parts, Service Bulletin modification parts, configuration differences (except left- and right-hand parts), product improvement parts, and parts added between two sequential item numbers. The alpha-variant is not shown on illustrations when appearance and location of all variants of the part is the same.

5. Service Bulletin modifications are shown by the notations PRE SB XXXX and POST SB XXXX.

A. When a new top assembly part number is assigned by Service Bulletin, the notations appear at the top assembly level only. The configuration differences at detail part level are then shown by use code letter.

B. When the top assembly part number is not changed by the Service Bulletin, the notations appear at the detail part level.

6. Parts Interchangeability

Optional
(OPT)

The parts are optional to and interchangeable with other parts having the same item number.

Supersedes, Superseded By
(SUPSDS, SUPSD BY)

The part supersedes and is not interchangeable with the original part.

Replaces, Replaced By
(REPLS, REPLD BY)

The part replaces and is interchangeable with, or is an alternate to, the original part.

25-29-55

7. Use substitute parts only as specified in the document D906-10182,
Electrical/Electronic/Electromechanical and Mechanical Parts Substitution.

25-29-55

ILLUSTRATED PARTS LIST
01.1 Page 1002
Nov 01/01

VENDORS

00779 AMP, INCORPORATED
2800 FULLING MILL
HARRISBURG, PA 17105-3608

09922 FRAMATOME CONNECTORS FRANCE
50 GRUMBACHER ROAD
YORK, PENNSYLVANIA 17402

11815 CHERRY AEROSPACE FASTENERS DIV OF TEXTRON
1224 EAST WARNER AVENUE PO BOX 2157
SANTA ANA, CALIFORNIA 92707-0157

15084 DUPREE INC AEROSPACE KNOB CO DIV
14395 RAMONA PO BOX 1797
CHINO, CALIFORNIA 91708-1797

15653 KAYNAR TECHNOLOGY KAYNAR DIV
800 SOUTH STATE COLLEGE BLVD PO BOX 3001
FULLERTON, CALIFORNIA 92634-3001

35344 LEACH CORP RELAY DIV SEE LEACH CORP CONTROL PROD DIV

52828 REPUBLIC FASTENER MFG CORP
1300 RANCHO CONEJO BLVD
NEWBURY PARK, CALIFORNIA 91320-1405

56623 BABCOCK INC
1717 WEST COLLINS AVENUE
ORANGE, CALIFORNIA 92667-5422

58657 LEACH INTERNATIONAL OF NORTH AMERICA
6900 ORANGETHORPE AVE PO BOX 5032
BUENA PARK, CALIFORNIA 90622-5032

61349 AMTEK INC U S GAUGE DIV
900 CLYMER AVENUE
SELLERSVILLE, PENNSYLVANIA 18960-2625

65092 WESTON INSTRUMENTS SEE AMETEK INC U S GAUGE DIV V61349

71087 BOOTS ACFT NUT DIV TOWNSEND CO SEE TEXTRON INC CHERRY
FASTENER TOWNSEND DIV V11815

72962 HARVARD INDUSTRIES INC
3 WERNER WAY SUITE 210
LEBANON, NEW JERSEY 08833

25-29-55

ILLUSTRATED PARTS LIST
01.101 Page 1003
Nov 01/01

VENDORS

75345 KIRKHILL RUBBER CO
300 EAST CYPRESS STREET
BREA, CALIFORNIA 92621-4007

78290 STRUTHERS-DUNN INC
85 NUTMEG RD
SOUTH WINDSOR, CONNECTICUT 06074

80539 SPS TECHNOLOGIES INC AEROSPACE PRODUCTS DIV
2701 SOUTH HARBOR BOULEVARD PO BOX 1259
SANTA ANA, CALIFORNIA 92702-1259

81073 GRAYHILL, INCORPORATED
561 HILLGROVE AVENUE PO BOX 10373
LA GRANGE, ILLINOIS 60525-5914

84914 LOS ANGELES STD RUBBER CO SEE KIRKHILL RUBBER CO V75345

91663 ARMEL ELECTRONICS, INCORPORATED
1601 75TH STREET
NORTH BERGEN, NEW JERSEY 07047-4046

91929 HONEYWELL INC MICRO SWITCH DIV
11 WEST SPRING STREET
FREEPORT, ILLINOIS 61032

92215 FAIRCHILD IND INC FAIRCHILD AEROSPACE FASTENER DIV
3010 W LOMITA BLVD
TORRANCE, CALIFORNIA 90505-5102

94222 SOUTHCO INCORPORATED
210 NORTH BRINTON LAKE ROAD
CONCORDVILLE, PENNSYLVANIA 19331

95272 SARGENT IND INC STILLMAN SEAL DIV
6020 AVENDIDA ENCINAS PO BOX 2000
CARLSBAD, CALIFORNIA 92008-4407

97393 SHUR-LOK CORPORATION
2541 WHITE ROAD PO BOX 19584
IRVINE, CALIFORNIA 92713

98927 ELECSPEC CORP ELECTRONIC SPECIALITY DIV
14511 NORTHEAST 13TH AVENUE PO BOX 3501
VANCOUVER, WASHINGTON 98668-3501

25-29-55

ILLUSTRATED PARTS LIST
01.101 Page 1004
Nov 01/01

417T6010, 285T0629
DASH NUMBERS
LIMITED



VENDORS

99699 DEUTSCH RELAYS INC
65 DALY ROAD
EAST NORTHPORT, L.I., NEW YORK 11731-6304

25-29-55

ILLUSTRATED PARTS LIST
01.101 Page 1005
Nov 01/01

REFERENCE DESIGNATOR INDEX (SEE SCHEMATIC DIAGRAM)		
REFERENCE DESIGNATOR	PART NUMBER	FIG-ITEM
K1	61GB19-1A320	1-225
K2	61GB19-1A320	225
M1	285T0495-1	250
N1	522302	60
N1	522504	60A
N1	522714	60B
N1	522719	60C
P1	BACC45FT24B61P	275
P2	BACC45FT16B24P	280
S1	2100-13	155
S3	2100-3	90
S4	2100-3	95
S5	2100-3	100
S7	44MY232320	40
S14	2100-1	137
S15	2100-1	137
S16	2100-1	135
S17	2100-1	135
S21	2100-1	165
S22	2100-3	105
S25	2100-3	85
S28	2400-3	70
S30	2100-3	85

25-29-55

PART NUMBER	AIRLINE PART NO.	FIG.	ITEM	TTL REQ
AML76C10T01P		1	150	1
AML78CB001		1	180	12
		1	185	3
		1	186	1
		1	190	2
		1	195	4
		1	200	5
		1	205	4
		1	210	5
		1	215	3
		1	217	1
		1	218	3
AML78FB001		1	175	3
AMY0200T5		1	295	1
AN960C8L		1	12	1
AN960PD6L		1	50	4
AN960PD8L		1	35	6
BACC10DK		1	15	1
BACC45FT16B24P		1	280	1
BACC45FT24B61P		1	275	1
BACN10JC04		1	270	3
BACN10JC06		1	55	4
BACN10JC08		1	10	1
BACN10R8L		1	10A	1
BACP20BA1		1	20	1
BACR11AM2		1	320	2
BACR12AG2C		1	475	2
BACR13CF2A		1	225	2
BACR15BA3AD		1	315	4
BACS16X1		1	220	2
BACS21AP80R		1	470	2
BACS21AP80RP		1	470A	2
BACT12AC43		1	245	4
BACT12AR201		1	65B	3
BACT12AR202		1	65	3
BACT12AR221		1	65A	3
BACT44B0200U		1	295	1
BAC27EEL19436		1	440	1
BAC27TPPS4103		1	442	1
BRH10A04		1	270	3
BRH10A06		1	55	4
BRH10A08		1	10	1
BR246S0112		1	225	2
BR64S104		1	225	2
E215-1050		1	225	2
FCA210-70		1	225	2
F22K1-82		1	10A	1

25-29-55

PART NUMBER	AIRLINE PART NO.	FIG.	ITEM	TTL REQ
HRTS9917KM		1	240	1
H10-04BAC		1	270	3
H10-06BAC		1	55	4
H10-08BAC		1	10	1
H1002S1-5W1		1	490	1
JD4A017		1	225	2
MS35333-38		1	37	6
NAS1394-08		1	450	11
NAS1801-04-10		1	255	3
NAS1801-08-4		1	30	6
NAS43DD0-20		1	265	3
NAS620-4		1	230	4
NAS620-4L		1	260	3
NS202101-40		1	270	3
NS202101-82		1	10	1
N2088		1	20	1
RD409-101		1	45	1
RMLH9075-40W		1	270	3
RMLH9075-62W		1	55	4
RMLH9075-82W		1	10	1
SL6156-08		1	455	1
SZ7105		1	20	1
S417T600-1		1	60	1
S417T600-2		1	60A	1
S417T600-3		1	60B	1
S417T600-4		1	60C	1
TD1482-7500		1	235	1
TNC2C0164		1	450A	11
T6S440J		1	270	3
T6S632J		1	55	4
T6S832J		1	10	1
VN303A40		1	270	3
VN303A62		1	55	4
VN303A82		1	10	1
1185-2CN0164		1	450B	11
2-295		1	320	2
2100-1		1	135	2
		1	137	2
		1	165	1
2100-100		1	110	2
		1	115	1
		1	120	1
2100-100		1	125	1
		1	127	2
		1	130	1
		1	170	1
2100-101		1	160	1

25-29-55

 ILLUSTRATED PARTS LIST
 01.101 Page 1008
 Nov 01/01

PART NUMBER	AIRLINE PART NO.	FIG.	ITEM	TTL REQ
2100-104		1	140A	1
2100-105		1	145A	1
2100-13		1	155	1
2100-130		1	140B	1
2100-131		1	145B	1
2100-134		1	140	1
2100-135		1	145	1
2100-136		1	140C	1
2100-137		1	145C	1
2100-138		1	140D	1
2100-139		1	145D	1
2100-141		1	140G	1
2100-142		1	145E	1
2100-143		1	110A	2
2100-144		1	140F	1
2100-145		1	145F	1
2100-148		1	140E	1
2100-152		1	140H	1
2100-153		1	145G	1
2100-164		1	140J	1
2100-165		1	145H	1
2100-3		1	85	2
		1	90	1
		1	95	1
		1	100	1
		1	105	1
22K1-82		1	10A	1
2400-100		1	75	1
2400-102		1	75A	1
2400-3		1	70	1
26CL82		1	10A	1
285T0495-1		1	250	1
285T0620-25		1	412	1
285T0620-27		1	413	1
285T0629-12		1	2	RF
285T0629-14		1	2A	RF
285T0629-67		1	2B	RF
285T0629-69		1	2C	RF
285T0629-70		1	2D	RF
285T0629-74		1	2E	RF
323912		1	245	4
417T6005-2		1	460	1
417T6005-4		1	465	1
417T6007-11		1	495	1
417T6007-4		1	490	1
417T6007-9		1	445	1

25-29-55

ILLUSTRATED PARTS LIST
01.101 Page 1009
Nov 01/01

PART NUMBER	AIRLINE PART NO.	FIG.	ITEM	TTL REQ
417T6009-100		1	25T	1
417T6009-65		1	25	1
417T6009-66		1	25A	1
417T6009-68		1	25B	1
417T6009-69		1	25C	1
417T6009-70		1	25D	1
417T6009-71		1	25E	1
417T6009-72		1	25F	1
417T6009-73		1	25G	1
417T6009-74		1	25H	1
417T6009-75		1	25J	1
417T6009-76		1	25K	1
417T6009-78		1	25L	1
417T6009-80		1	25N	1
417T6009-83		1	25P	1
417T6009-84		1	25Q	1
417T6009-85		1	25R	1
417T6009-99		1	25S	1
417T6010-57		1	1	RF
417T6010-58		1	1A	RF
417T6010-59		1	1B	RF
417T6010-60		1	1C	RF
417T6010-61		1	1D	RF
417T6010-62		1	1E	RF
417T6010-63		1	1F	RF
417T6010-64		1	1G	RF
417T6010-65		1	1H	RF
417T6010-66		1	1J	RF
417T6010-67		1	1K	RF
417T6010-68		1	1L	RF
417T6010-70		1	1N	RF
417T6010-71		1	1P	RF
417T6010-72		1	1Q	RF
417T6010-73		1	1R	RF
417T6011-13		1	290A	1
417T6011-37		1	290B	1
417T6011-9		1	290	1
417T6012-11		1	395	1
417T6012-13		1	400	1
417T6012-19		1	437	1

25-29-55

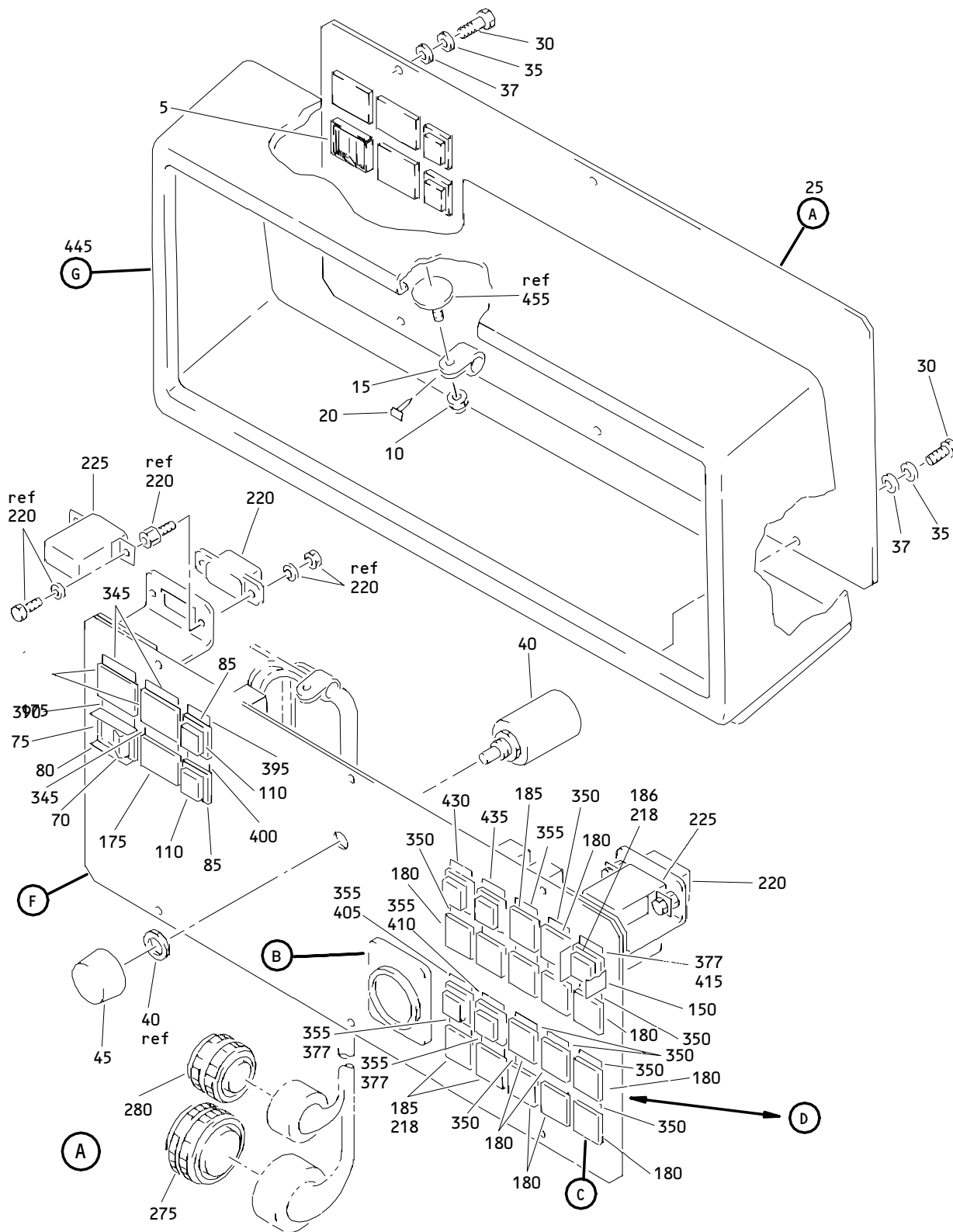
 ILLUSTRATED PARTS LIST
 01.101 Page 1010
 Nov 01/01

PART NUMBER	AIRLINE PART NO.	FIG.	ITEM	TTL REQ
417T6012-2		1	345	3
417T6012-3		1	350	10
		1	355	3
		1	360	2
		1	365	4
		1	370	5
		1	375	4
		1	377	3
		1	380	5
		1	385	3
		1	387	1
		1	412A	1
		1	413A	1
417T6012-4		1	390	1
417T6012-49		1	420	1
417T6012-5		1	415	1
417T6012-51		1	425	1
417T6012-67		1	405	1
417T6012-69		1	410	1
417T6012-7		1	430	1
417T6012-9		1	435	1
417T6014-3		1	480	1
417T6014-6		1	485	1
417T6017-1		1	300	2
417T6017-2		1	310	2
417T6017-3		1	325	2
417T6017-4		1	305A	1
417T6017-5		1	305	1
417T6019-1		1	5	1
		1	80	1
44MY232320		1	40	1
4841		1	20	1
51863-3		1	65	3
522302		1	60	1
522504		1	60A	1
522714		1	60B	1
522719		1	60C	1
52273		1	65A	3
52273-1		1	65B	3
60729-1		1	285A	1
61GB19-1A320		1	225	2
61048-1		1	285	1
61048-1		1	287	1

25-29-55

PART NUMBER	AIRLINE PART NO.	FIG.	ITEM	TTL REQ
82-99-341-08		1	470A	2
82-99-342-15		1	320	2
96-40		1	270	3
96-62		1	55	4
96-82		1	10	1

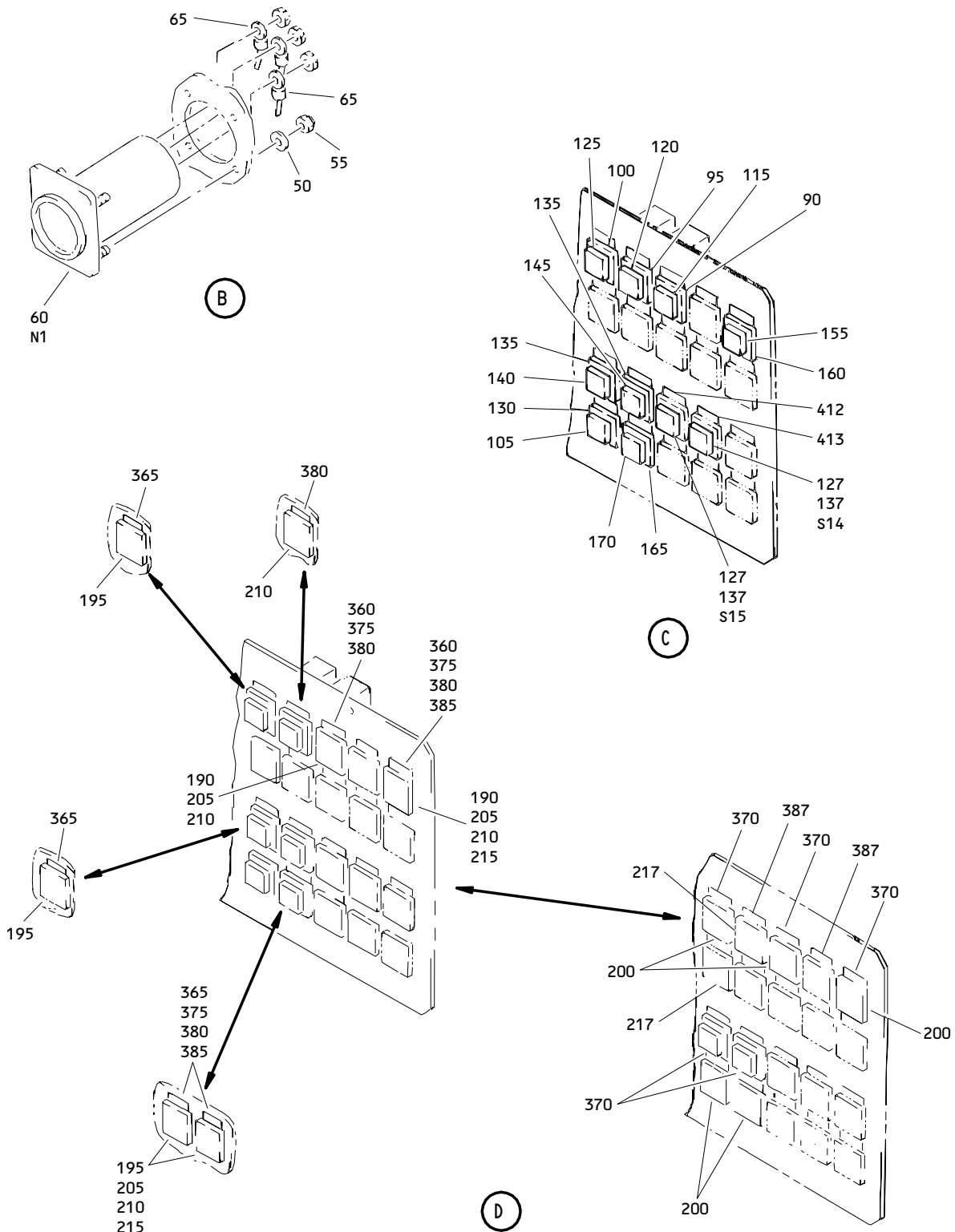
25-29-55



Aft Attendants Panel Assembly
 Figure 1 (Sheet 1)

25-29-55

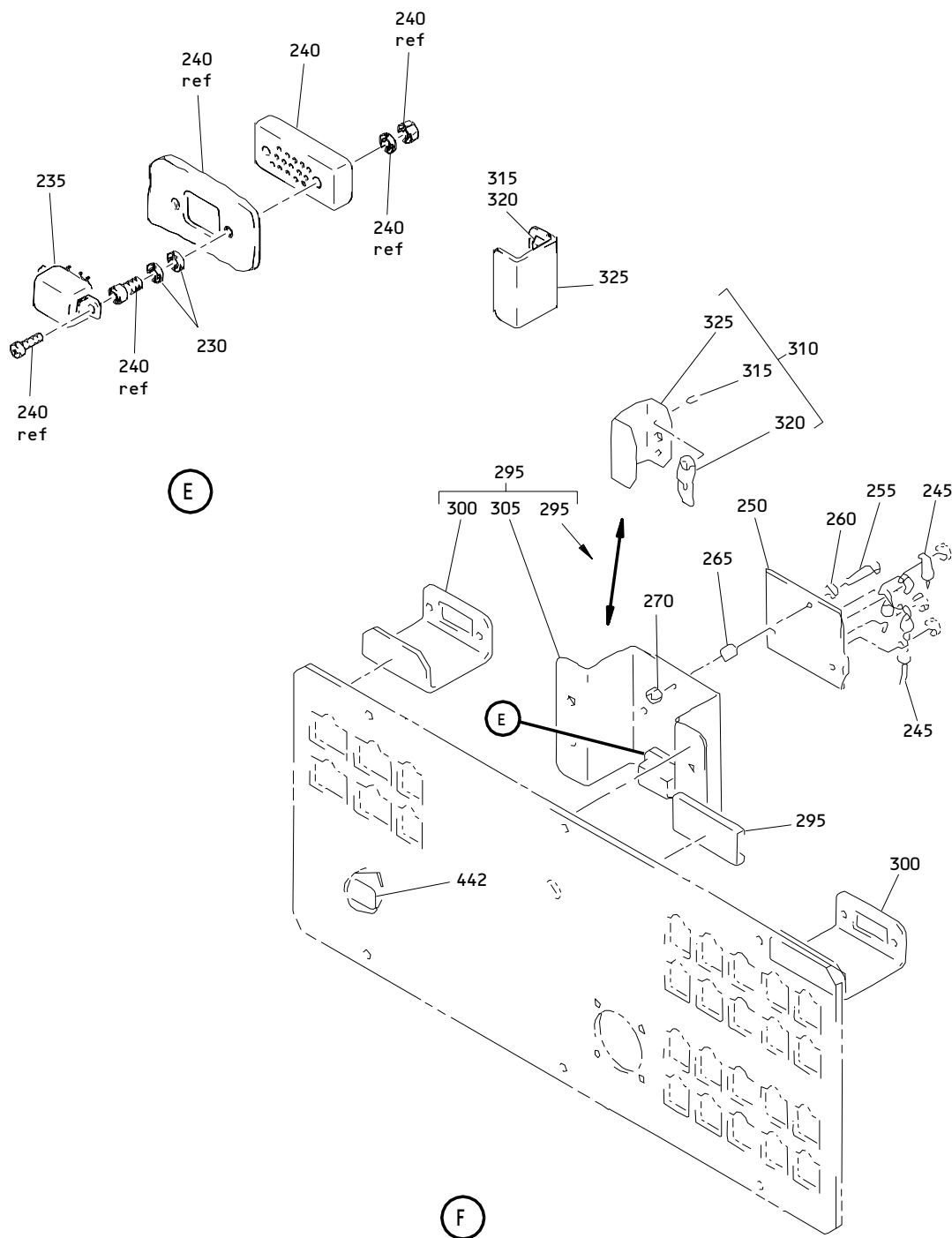
ILLUSTRATED PARTS LIST
 01.1 Page 1013
 Mar 01/99



Aft Attendants Panel Assembly
 Figure 1 (Sheet 2)

25-29-55

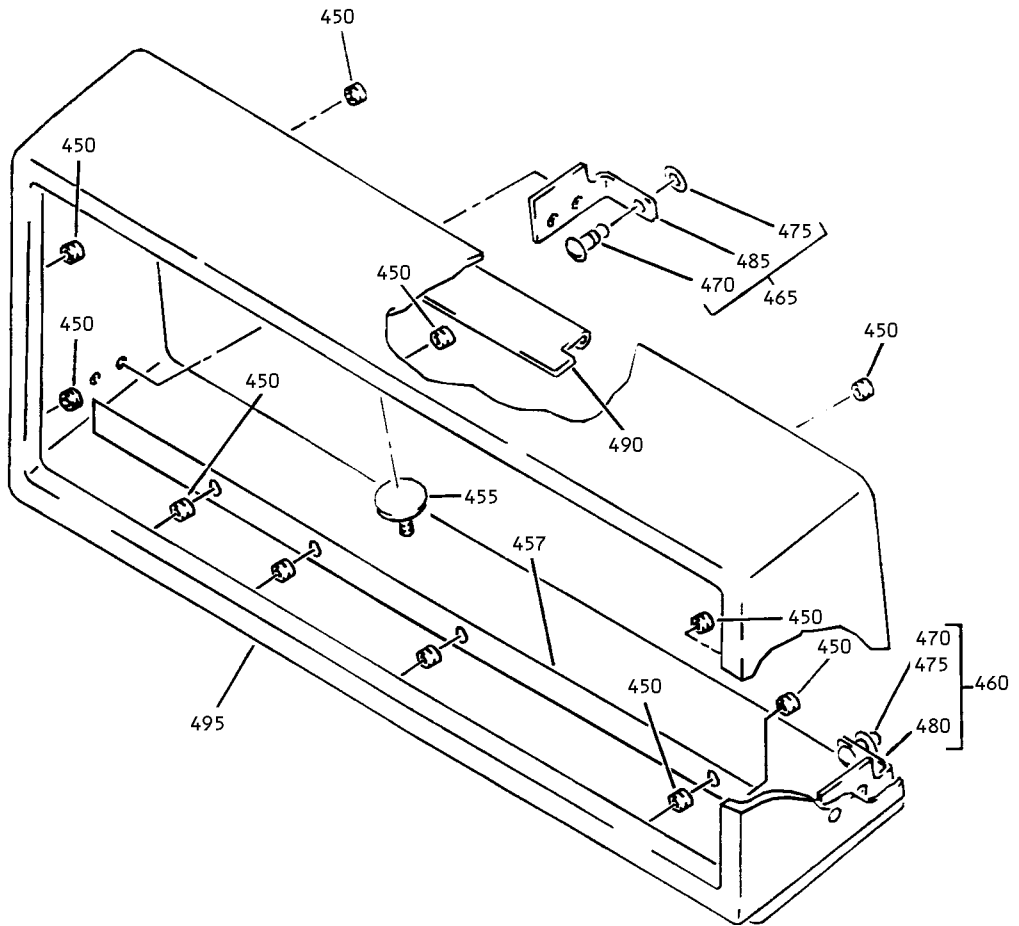
ILLUSTRATED PARTS LIST
 01.1 Page 1014
 Mar 01/99



Aft Attendants Panel Assembly
Figure 1 (Sheet 3)

25-29-55

ILLUSTRATED PARTS LIST
01.1 Page 1015
Mar 01/99



G

Aft Attendants Panel Assembly
 Figure 1 (Sheet 4)

25-29-55

ILLUSTRATED PARTS LIST
 01.1 Page 1016
 Nov 01/01

FIG. & ITEM	PART NO.	AIRLINE PART NUMBER	NOMENCLATURE 1234567	EFF CODE	QTY PER ASSY
01-					
-1	417T6010-57		PANEL ASSY-AFT ATTENDANTS	A	RF
-1A	417T6010-58		PANEL ASSY-AFT ATTENDANTS (STATIC SENSITIVE PART)	B	RF
-1B	417T6010-59		PANEL ASSY-AFT ATTENDANTS	C	RF
-1C	417T6010-60		PANEL ASSY-AFT ATTENDANTS (PRE SB 417T6010-25-02)	D	RF
-1D	417T6010-61		PANEL ASSY-AFT ATTENDANTS	E	RF
-1E	417T6010-62		PANEL ASSY-AFT ATTENDANTS	F	RF
-1F	417T6010-63		PANEL ASSY-AFT ATTENDANTS	G	RF
-1G	417T6010-64		PANEL ASSY-AFT ATTENDANTS	H	RF
-1H	417T6010-65		PANEL ASSY-AFT ATTENDANTS (PRE SB 417T6010-25-02)	J	RF
-1J	417T6010-66		PANEL ASSY-AFT ATTENDANTS (PRE SB 417T6010-25-02)	K	RF
-1K	417T6010-67		PANEL ASSY-AFT ATTENDANTS	L	RF
-1L	417T6010-68		PANEL ASSY-AFT ATTENDANTS	M	RF
-1M	417T6010-69		DELETED		
-1N	417T6010-70		PANEL ASSY-AFT ATTENDANTS	P	RF
-1P	417T6010-71		PANEL ASSY-AFT ATTENDANTS (PRE SB 417T6010-25-02)	Q	RF
-1Q	417T6010-72		PANEL ASSY-AFT ATTENDANTS	R	RF
-1R	417T6010-73		PANEL ASSY-AFT ATTENDANTS	S	RF
-2	285T0629-12		PANEL ASSY-AFT ATTENDANTS	T	RF
-2A	285T0629-14		PANEL ASSY-AFT ATTENDANTS	U	RF
-2B	285T0629-67		PANEL ASSY-AFT ATTENDANTS (POST SB 417T6010-25-02)	V	RF
-2C	285T0629-69		PANEL ASSY-AFT ATTENDANTS (POST SB 417T6010-25-02)	W	RF
-2D	285T0629-70		PANEL ASSY-AFT ATTENDANTS (POST SB 417T6010-25-02)	X	RF
-2E	285T0629-74		PANEL ASSY-AFT ATTENDANTS (POST SB 417T6010-25-02)	Y	RF
5	417T6019-1		.BEZEL-EMER LT TEST SW RAISED	A,D,E ,G,J, K,P,R ,S,V, Y	1

25-29-55

FIG. & ITEM	PART NO.	AIRLINE PART NUMBER	NOMENCLATURE 1234567	EFF CODE	QTY PER ASSY
01-10	H10-08BAC		.NUT- (V15653) (SPEC BACN10JC08) (OPT NS202101-82 (V80539)) (OPT RMLH9075-82W (V72962)) (OPT T6S832J (V71087)) (OPT VN303A82 (V92215)) (OPT 96-82 (V80539)) (OPT BRH10A08 (V52828)) (OPT ITEM 10A WHEN USED WITH ITEM 12)		1
R -10A	F22K1-82		.NUT- (V72962) (SPEC BACN10R8L) (OPT 22K1-82 (V72962)) (OPT 26CL82 (V80539)) (OPT ITEM 10 WHEN USED WITH ITEM 12)		1
R -12	AN960C8L		.WASHER- (USED WITH 10A)		1
15	BACC10DK		.CLAMP		1
20	N2088		.PLUG- (V75345) (SPEC BACP20BA1) (OPT SZ7105 (V95272)) (OPT 4841 (V84914))		1
25	417T6009-65		.WIRING ASSY-FACEPLATE	A	1
-25A	417T6009-66		.WIRING ASSY-FACEPLATE (STATIC SENSITIVE PART)	B	1
-25B	417T6009-68		.WIRING ASSY-FACEPLATE	C	1
-25C	417T6009-69		.WIRING ASSY-FACEPLATE	D,V	1
-25D	417T6009-70		.WIRING ASSY-FACEPLATE	E	1
-25E	417T6009-71		.WIRING ASSY-FACEPLATE	F	1
-25F	417T6009-72		.WIRING ASSY-FACEPLATE	G	1
-25G	417T6009-73		.WIRING ASSY-FACEPLATE	H	1

25-29-55

 ILLUSTRATED PARTS LIST
 01.1 Page 1018
 Mar 01/99

FIG. & ITEM	PART NO.	AIRLINE PART NUMBER	NOMENCLATURE 1234567	EFF CODE	QTY PER ASSY
01-					
-25H	417T6009-74		.WIRING ASSY-FACEPLATE	J,W	1
-25J	417T6009-75		.WIRING ASSY-FACEPLATE	K,Y	1
-25K	417T6009-76		.WIRING ASSY-FACEPLATE	L	1
-25L	417T6009-78		.WIRING ASSY-FACEPLATE	M	1
-25M	417T6009-79		DELETED		
-25N	417T6009-80		.WIRING ASSY-FACEPLATE	P	1
-25P	417T6009-83		.WIRING ASSY-FACEPLATE	Q,X	1
-25Q	417T6009-84		.WIRING ASSY-FACEPLATE	R	1
-25R	417T6009-85		.WIRING ASSY-FACEPLATE	S	1
-25S	417T6009-99		.WIRING ASSY-FACEPLATE	T	1
-25T	417T6009-100		.WIRING ASSY-FACEPLATE	U	1
			ATTACHING PARTS		
30	NAS1801-08-4		.SCREW		6
35	AN960PD8L		.WASHER		6
37	MS35333-38		.WASHER		6
			-----*-----		
R 40	44MY232320		..SWITCH-THREE DECKS ROTARY (V81073) (S7)		1
45	RD409-101		..KNOB- (V15084)		1
50	AN960PD6L		..WASHER		4
55	H10-06BAC		..NUT- (V15653) (SPEC BACN10JC06) (OPT RMLH9075-62W (V72962)) (OPT T6S632J (V11815)) (OPT VN303A62 (V92215)) (OPT 96-62 (V80539)) (OPT BRH10A06 (OPT BRH10A06 (V52828))		4
60	522302		..INDICATOR-POTABLE WATER QTY GAGE (V65092) (N1) (SPEC S417T600-1)	A,C-E ,H,J, Q,T, V-X	1

25-29-55

FIG. & ITEM	PART NO.	AIRLINE PART NUMBER	NOMENCLATURE 1234567	EFF CODE	QTY PER ASSY
01- -60A	522504		..INDICATOR-POTABLE WATER QTY GAGE (V65092) (N1) (SPEC S417T600-2)	B,G,M	1
-60B	522714		..INDICATOR-POTABLE WATER QTY GAGE (V65092) (N1) (SPEC S417T600-3)	F,P,R	1
R -60C	522719		..INDICATOR-POTABLE WATER QTY GAGE (V65092) (N1) (SPEC S417T600-4)	K,L,S ,U,X	1
65	51863-3		..TERMINAL- (V00779) (SPEC BACT12AR202)	A-C, F-J,L ,M	3
-65A	52273		..TERMINAL- (V00779) (SPEC BACT12AR221)	D,P,V	3
-65B	52273-1		..TERMINAL- (V00779) (SPEC BACT12AR201)	E,K, Q-U,X ,Y	3
70	2400-3		..SWITCH-TWO POLE TWO POSITION (ON MOM) ONE LAMP ROCKER (V91929) (S28)		1
75	2400-100		..LENS-WHITE OFF POSITON NO INSERT ON POSITION AMBER INSERT (V91929)	A-C	1
-75A	2400-102		..LENS-WHITE ON AND OFF POSITION AMBER INSERT (V91929)	D-M, P-Y	1
80	417T6019-1		..BEZEL-EMER LT TEST SW RAISED	B,C,F ,H,L, M,T,U	1
85	2100-3		..SWITCH-TWO POLE ALTERNATING (V91929) (S25, S30)		2

25-29-55

 ILLUSTRATED PARTS LIST
 01.1 Page 1020
 Mar 01/99

FIG. & ITEM	PART NO.	AIRLINE PART NUMBER	NOMENCLATURE 1234567	EFF CODE	QTY PER ASSY
01-90	2100-3		..SWITCH-TWO POLE ALTERNATING (V91929) (S3)	L,Q,T ,U,X	1
95	2100-3		..SWITCH-TWO POLE ALTERNATING (V91929) (S4)	A-C, E-H, K-M, P-U,X ,Y	1
100	2100-3		..SWITCH-TWO POLE ALTERNATING (V91929) (S5)	A,B, E-M, P-U, W-Y	1
105	2100-3		..SWITCH-TWO POLE ALTERNATING (V91929) (S22)	B	1
110	2100-100		..LENS-WHITE NO INSERT (V91929)	A-H,M ,T-V	2
-110A	2100-143		..LENS-WHITE AMBER INSERT POWER ON LEGEND (V91929)	J-L, P-S, W-Y	2
115	2100-100		..LENS-WHITE (V91929)	L,Q,T ,U,X	1
120	2100-100		..LENS-WHITE (V91929)	A-C, E-H, K-M, P-U,X ,Y	1
125	2100-100		..LENS-WHITE (V91929)	A,B, E-M, P-U, W-Y	1
127	2100-100		..LENS-WHITE NO INSERT (V91929)	V-Y	2
130	2100-100		..LENS-WHITE (V91929)	B	1
135	2100-1		..SWITCH-TWO POLE MOM (V91929) (S16, S17)		2
137	2100-1		..SWITCH-TWO POLE MOM (V91929) (S14, S15)	V-Y	2
140	2100-134		..LENS-WHITE (V91929)	A	1

25-29-55

ILLUSTRATED PARTS LIST
01.1 Page 1021
Mar 01/99

FIG. & ITEM	PART NO.	AIRLINE PART NUMBER	NOMENCLATURE 1234567	EFF CODE	QTY PER ASSY
01-					
-140A	2100-104		..LENS-WHITE (V91929)	B,C,E ,M	1
-140B	2100-130		..LENS-WHITE (V91929)	D,V	1
-140C	2100-136		..LENS-WHITE (V91929)	F	1
-140D	2100-138		..LENS-WHITE (V91929)	G,H	1
-140E	2100-148		..LENS-WHITE (V91929)	J,W	1
-140F	2100-144		..LENS-WHITE (V91929)	K,Q-S ,X,Y	1
-140G	2100-141		..LENS-WHITE (V91929)	L	1
R -140H	2100-152		..LENS-WHITE (V91929)	P	1
R -140J	2100-164		..LENS-WHITE (V91929)	T,U	1
145	2100-135		..LENS-WHITE (V91929)	A	1
-145A	2100-105		..LENS-WHITE (V91929)	B,C,E ,M	1
-145B	2100-131		..LENS-WHITE (V91929)	D,V	1
-145C	2100-137		..LENS-WHITE (V91929)	F	1
-145D	2100-139		..LENS-WHITE (V91929)	G,H	1
-145E	2100-142		..LENS-WHITE (V91929)	J,L,W	1
-145F	2100-145		..LENS-WHITE (V91929)	K,Q-S ,X,Y	1
R -145G	2100-153		..LENS-WHITE (V91929)	P	1
R -145H	2100-165		..LENS-WHITE (V91929)	T,U	1
150	AML76C10T01P		..GUARD-SW (V91929)	A,C,H ,P	1
155	2100-13		..SWITCH-FOUR POLE ALTERNATING (V91929) (S1)	A,C,H ,P	1
160	2100-101		..LENS-WHITE (V91929)	A,C,H ,P	1

25-29-55

 ILLUSTRATED PARTS LIST
 01.1 Page 1022
 Mar 01/99

FIG. & ITEM	PART NO.	AIRLINE PART NUMBER	NOMENCLATURE 1234567	EFF CODE	QTY PER ASSY
01-165	2100-1		..SWITCH-TWO POLE MOM (V91929) (S21)	B	1
170	2100-100		..LENS-WHITE (V91929)	B	1
175	AML78FB001		..PLUG-RECTANGULAR (V91929)		3
180	AML78CB001		..PLUG-SQUARE (V91929)		12
185	AML78CB001		..PLUG-SQUARE (V91929)	A,H,P ,T,U	3
186	AML78CB001		..PLUG-SQUARE (V91929)	T,U	1
190	AML78CB001		..PLUG-SQUARE (V91929)	B	2
195	AML78CB001		..PLUG-SQUARE (V91929)	C	4
200	AML78CB001		..PLUG-SQUARE (V91929)	D,V	5
205	AML78CB001		..PLUG-SQUARE (V91929)	E-G,K ,M,R, S,Y	4
210	AML78CB001		..PLUG-SQUARE (V91929)	J,W	5
215	AML78CB001		..PLUG-SQUARE (V91929)	L	3
217	AML78CB001		..PLUG-SQUARE (V91929)	D,V	1
218	AML78CB001		..PLUG-SQUARE (V91929)	Q,X	3
220	BACS16X1		..SOCKET		2
225	61GB19-1A320		..RELAY- (V98927) (SPEC BACR13CF2A) (OPT JD4A017 (V35344)) (OPT BR64S104 (V56623)) (OPT BR246S0112 (V56623)) (OPT FCA210-70 (V78290)) (OPT E215-1050 (V99699)) (K1, K2)		2

25-29-55

FIG. & ITEM	PART NO.	AIRLINE PART NUMBER	NOMENCLATURE 1234567	EFF CODE	QTY PER ASSY
R	01-				
	230	NAS620-4	..WASHER	B	4
	235	TD1482-7500	..TIMER-REPEAT CYCLE (V58657)	B	1
	240	HRTS9917KM	..RECEPTACLE- (V91663)	B	1
	245	323912	..TERMINAL- (V00779)	B	4
	250	285T0495-1	(SPEC BACT12AC43) ..PRINTED CIRCUIT ASSY- POTABLE WATER SIGNAL UNIT (STATIC SENSITIVE PART) (M1) (REF CMM 38-14-51) ATTACHING PARTS	B	1
	255	NAS1801-04-10	..SCREW	B	3
	260	NAS620-4L	..WASHER	B	3
	265	NAS43DD0-20	..SPACER	B	3
	270	H10-04BAC	..NUT- (V15653) (SPEC BACN10JC04) (OPT NS202101-40 (V80539)) (OPT RMLH9075-40W (V72962)) (OPT T6S440J (V11815)) (OPT VN303A40 (V92215)) (OPT 96-40 (V80539)) (OPT BRH10A04 (V52828)) -----*	B	3

25-29-55

FIG. & ITEM	PART NO.	AIRLINE PART NUMBER	NOMENCLATURE 1234567	EFF CODE	QTY PER ASSY
01-275	BACC45FT24B61P		..CONNECTOR-(P1)		1
280	BACC45FT16B24P		..CONNECTOR-(P2)		1
-285	61048-1		..TERMINAL-POKE ON (V00779) (OPT ITEM 285A)	A-H,L ,M, T-V	AR
-285A	60729-1		..TERMINAL-POKE ON (V00779) (OPT ITEM 285)	A-H,L ,M, T-V	AR
-287	61048-1		..TERMINAL-POKE ON (V00779)	J,K, Q-S, W-Y	AR
290	417T6011-9		..FACEPLATE ASSY	B	1
-290A	417T6011-13		..FACEPLATE ASSY	C,J,W	1
-290B	417T6011-37		..FACEPLATE ASSY	A,D-H ,L,M, P,Q, T-V,X	1
-290C	417T6011-9		..FACEPLATE ASSY-(OPT ITEM 290D)	K,R,S ,Y	1
-290D	417T6011-37		..FACEPLATE ASSY-(OPT ITEM 290C)	K,R,S ,Y	1
295	AMY0200T5		...TRACK-(V09922) (SPEC BACT44B0200U)		1
300	417T6017-1		...BRACKET-MTG		2
305	417T6017-5		...BRACKET-MTG (OPT ITEM 305A) (USED ON ITEMS 290 290C)	B,K,R ,S	1

25-29-55

FIG. & ITEM	PART NO.	AIRLINE PART NUMBER	NOMENCLATURE 1234567	EFF CODE	QTY PER ASSY
01- -305A	417T6017-4		...BRACKET-MTG (OPT ITEM 305) (USED ON ITEMS 290, 290C)	B,K,R ,S	1
310	417T6017-2		...BRACKET ASSY-MTG	C,J,W	2
315	BACR15BA3AD	RIVET- (SIZE DETERMINE ON INST)	C,J,W	2
320	82-99-342-15	RECEPTACLE- (V94222) (SPEC BACR11AM2) (OPT 2-295 (V94222))	C,J,W	1
325	417T6017-3	BRACKET	C,J,W	1
330	417T6011-10		DELETED		
-330A	417T6011-14		DELETED		
335	417T6011-11		DELETED		
-335A	417T6011-15		DELETED		
340	417T6011-12		DELETED		
-340A	417T6011-16		DELETED		
345	417T6012-2		..DECAL-SLIP IN		3
350	417T6012-3		..DECAL-SLIP IN		10
355	417T6012-3		..DECAL-SLIP IN	A,H,P	3
360	417T6012-3		..DECAL-SLIP IN	B	2
365	417T6012-3		..DECAL-SLIP IN	C	4
370	417T6012-3		..DECAL-SLIP IN	D,V	5
375	417T6012-3		..DECAL-SLIP IN	E-G,K ,M, R-U,Y	4
377	417T6012-3		..DECAL-SLIP IN	Q,X	3
380	417T6012-3		..DECAL-SLIP IN	J,W	5
385	417T6012-3		..DECAL-SLIP IN	L	3
387	417T6012-3		..DECAL-SLIP IN	D,V	1
388	417T6012-3		DELETED		
390	417T6012-4		..DECAL-SLIP IN (EMER LTS)		1

25-29-55

 ILLUSTRATED PARTS LIST
 01.1 Page 1026
 Mar 01/99

FIG. & ITEM	PART NO.	AIRLINE PART NUMBER	NOMENCLATURE 1234567	EFF CODE	QTY PER ASSY
01-					
395	417T6012-11		..DECAL-SLIP IN (ENTRY-L)		1
400	417T6012-13		..DECAL-SLIP IN (ENTRY-R)		1
405	417T6012-67		..DECAL-SLIP IN (LAV INOP AFT TANK)		1
410	417T6012-69		..DECAL-SLIP IN (LAV INOP FWD TANK)		1
412	285T0620-25		..DECAL-SNSR FOUL AFT TANK	V-Y	1
-412A	417T6012-3		..DECAL-SLIP IN	A-U	1
413	285T0620-27		..DECAL-SNSR FOUL FWD TANK	V-Y	1
-413A	417T6012-3		..DECAL-SLIP IN	A-U	1
415	417T6012-5		..DECAL-SLIP IN (EMER LTG)	A,C,H ,P	1
420	417T6012-49		..DECAL-SLIP IN (LOW WATER SHUTOFF)	B	1
425	417T6012-51		..DECAL-SLIP IN (LOW WATER WARNING)	B	1
430	417T6012-7		..DECAL-SLIP IN (ATTND-L)	A,B, E-M, Q-S, W-Y	1
435	417T6012-9		..DECAL-SLIP IN (ATTND-R)	A-C, E-H, K-M, Q-S,X ,Y	1
437	417T6012-19		..DECAL-SLIP IN (ATTND-C)	Q,T,U ,X	1
440	BAC27EEL19436		..MARKER-ALUMINUM FOIL (ESDS)	B	1
442	BAC27TPPS4103		..MARKER-ALUMINUM FOIL- (M885)	C,J,W	1
445	417T6007-9		.SHROUD ASSY		1
450	NAS1394-08		..INSERT- (OPT ITEMS 450A, 450B)		11
-450A	TNC2C0164		..INSERT- (OPT ITEMS 450, 450B)		11
-450B	1185-2CN0164		..INSERT- (OPT ITEMS 450, 450A)		11
455	SL6156-08		..STUD- (V97393)		1

25-29-55

FIG. & ITEM	PART NO.	AIRLINE PART NUMBER	NOMENCLATURE 1234567	EFF CODE	QTY PER ASSY
01-					
460	417T6005-2		..BRACKET ASSY-MTG		1
465	417T6005-4		..BRACKET ASSY-MTG		1
470	BACS21AP80R		...STUD- (OPT ITEM 470A)		1
-470A	82-99-341-08		...STUD- (V94222) (SPEC BACS21AP80RP) (OPT ITEM 470)		1
475	BACR12AG2C		...RING		1
480	417T6014-3		...BRACKET- (USED ON ITEM 460)		1
485	417T6014-6		...BRACKET- (USED ON ITEM 465)		1
490	417T6007-4		..HINGE-DUAL LATCHING (ALT FROM H1002S1-5W1)		1
495	417T6007-11		..SHROUD		1

- Item Not Illustrated

25-29-55

ILLUSTRATED PARTS LIST
 01.1 Page 1028
 Mar 01/99